



氣動油壓泵浦單元  
AIR DRIVE HYDRAULIC  
PUMP UNIT



TA型夾模器  
TA DIE CLAMP



TB型夾模器  
TB DIE CLAMP

## 快速換模系統 QUICK DIE CHANGE SYSTEM

歐特力機械有限公司  
AUTO POWER MACHINERY CO., LTD.

■ 印刷電路板沖孔脫料系統 ■ 沖床超負荷保護裝置 ■ 高速沖床鎖模裝置 ■ 射出機 · 壓鑄機快速換模系統

E-mail:auto.power8@msa.hinet.net



舉模器  
DIE LIFTER SERIES



移模臂  
BOLSTER  
EXTENSION SERIES



電控操作箱  
ELECTRONIC  
CONTROL  
OPERATION PANEL





### 氣動油壓泵浦單元 AIR DRIVE HYDRAULIC PUMP UNIT

- PF08 - 110
- PF08 - 101
- PF08 - 220
- PF08 - 211
- PF08 - 321
- PF08 - 431

詳閱 P03~04

FOR DETAILS, REFER TO PAGES 03~04



### TA型夾模器(直拉式) TA DIE CLAMP

- TA - 01
- TA - 02
- TA - 04
- TA - 06
- TA - 10
- TA - 16
- TA - 25

詳閱 P05

FOR DETAILS, REFER TO PAGES 05

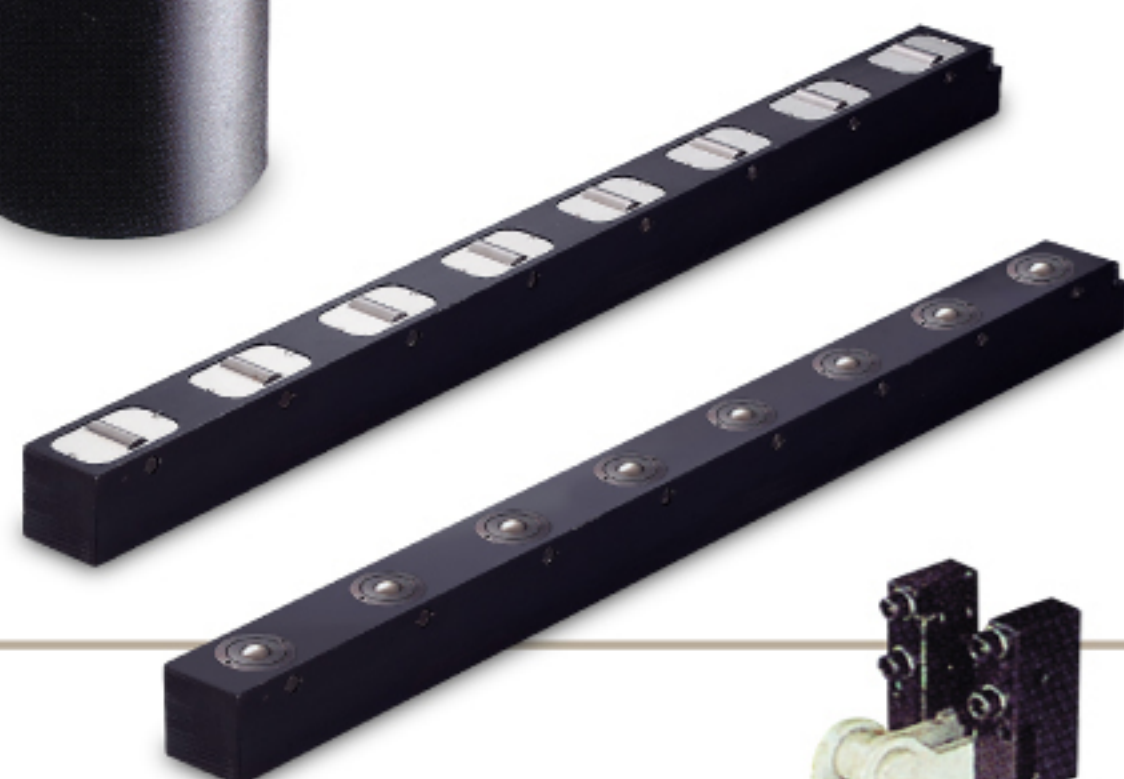


### TB型夾模器(壓板式) TB DIE CLAMP

- TB - 01
- TB - 02
- TB - 04
- TB - 06
- TB - 10
- TB - 16
- TB - 25

詳閱 P06

FOR DETAILS, REFER TO PAGES 06

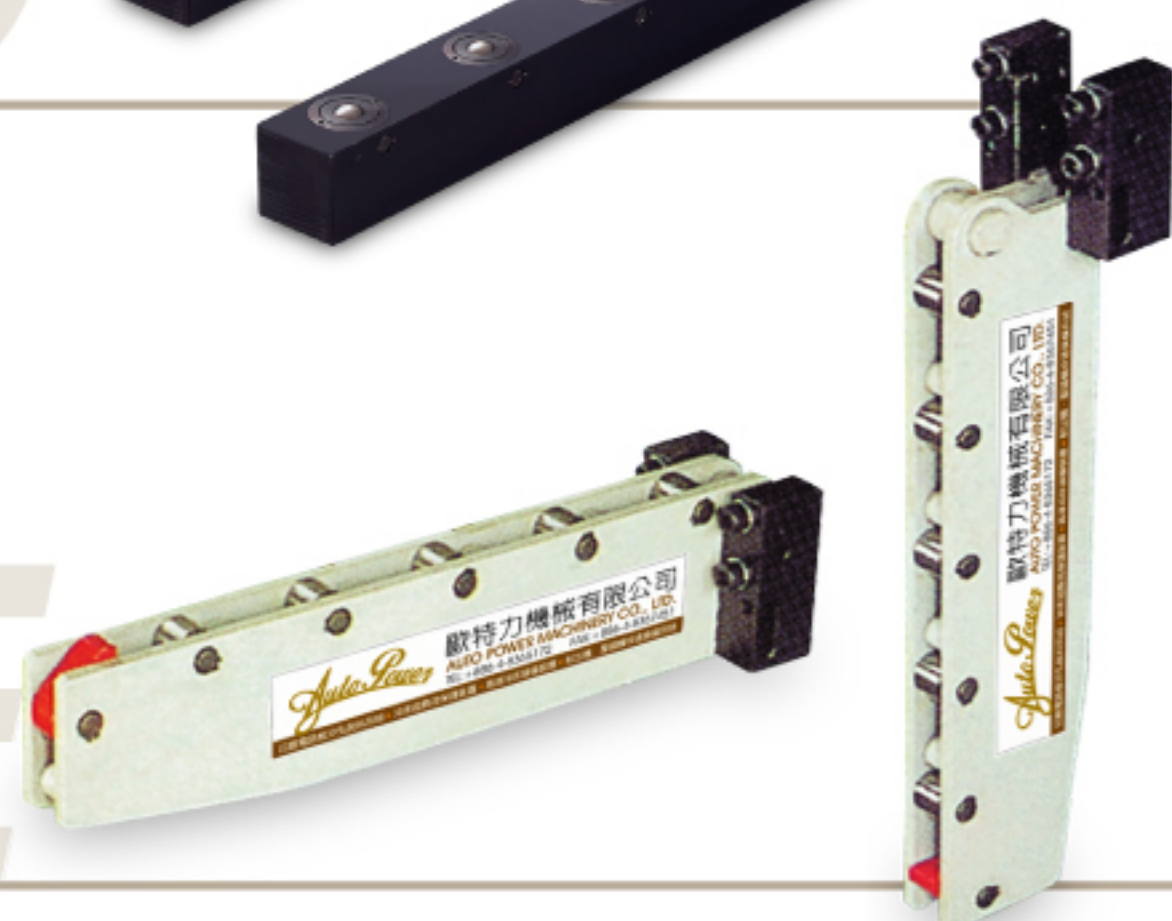


### 舉模器 DIE LIFTER SERIES

- |                        |                   |
|------------------------|-------------------|
| 油壓式 Hydraulic          | 彈簧式 Spring        |
| ● Roller Type:DL 28/50 | ● Roller Type:DLS |
| ● Ball Type:DB 28/50   | ● Ball Type:DS    |

詳閱 P07~08

FOR DETAILS, REFER TO PAGES 07~08



### 移模臂 BOLSTER EXTENSION SERIES

- RC 拆卸式
- RD 折掛式
- RE / RF 折疊式
- RS 支柱式

詳閱 P09~12

FOR DETAILS, REFER TO PAGES 09~12



### 電控操作箱 ELECTRONIC CONTROL OPERATION PANEL

- 具防錯邏輯保護功能  
Safeguard Logical Circuit.

另有特殊/訂製規格產品 · 歡迎來電洽詢



### 電控操作箱

#### ELECTRONIC CONTROL OPERATION PANEL

- 具有與機台連線控制開關。
- 具有防止錯誤操作之安全控制。
- It is equipped with interlock control-switch of which its cable is interlocked the machine.
- It is equipped with one safety-control device in which is for preventing any wrong operation.



### TA型夾模器(直拉式)

#### TA DIE CLAMP (Piston Type)

### TB型夾模器(壓板式)

#### TB DIE CLAMP (Lever Type)

- 取代傳統用螺絲鎖模方式。
- 利用台盤T型槽鎖固定或直接固定於台盤。
- Replace the traditional method which used the screw to fix the mold.
- Use the T-slot of the plate to fix or fix directly on the plate.



### 氣動油壓泵浦單元

#### AIR DRIVE HYDRAULIC PUMP UNIT

- 具檢知功能可與機台連線。
- 各配備之間的動作亦可互相牽制，以確保最佳操作安全。
- 模組化設計，服務支援迅速、維修更便利。
- It has the function of inspection pressure and can be interlocked with the machine.
- The movement between each equipment will be pinned down mutually in order to insure the safety of operation.
- Module design, service-support speedy, maintain easy.

### 移模臂

#### BOLSTER EXTENSION SERIES

- 可使模具輕易從台盤拉出或推入。
- 不用時配合操作方便，有四種存放方式供選擇。
- Can pull out and push in the die from the plate easily.
- There are 4 easy operative ways for the storage when it is not used.

### 舉模器

#### DIE LIFTER

##### Mode: DL • DB

- 油壓式 / Hydraulic Type
- 裝置於台盤T型槽或U槽  
Install in the T-slot or U-slot.

##### Mode: DS / DLS

- 彈簧式 / Spring Type
- 裝置於台盤T型槽或U槽 / Install in the T-slot or U-slot.
- 平均分散於台盤上  
Spread equally and install in the plate.

油壓式與彈簧式有滾輪 ↔ 滾珠供選擇

Hydraulic & Spring Type have roller and ball to choice.

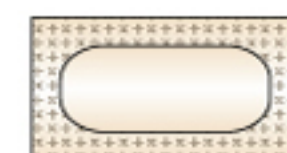


■ 氣動油壓泵浦單元 AIR DRIVE HYDRAULIC PUMP UNIT

THE CHOICE OF THE MODLE · 型式選定



**PF08 -**



迴路數Number Of Circuit

迴路型式Circuit Code

1	10	NO*1	NC*0
	01	NO*0	NC*1
2	20	NO*2	NC*0
	11	NO*1	NC*1
3	21	NO*2	NC*1
	31	NO*3	NC*1

\*NO常開迴路，通用於夾模器

\*NC常閉迴路，通用於舉模器

氣動油壓泵浦單元之使用選定 THE CHOICE OF THE AIR DRIVE HYDRAULIC PUMP UNIT

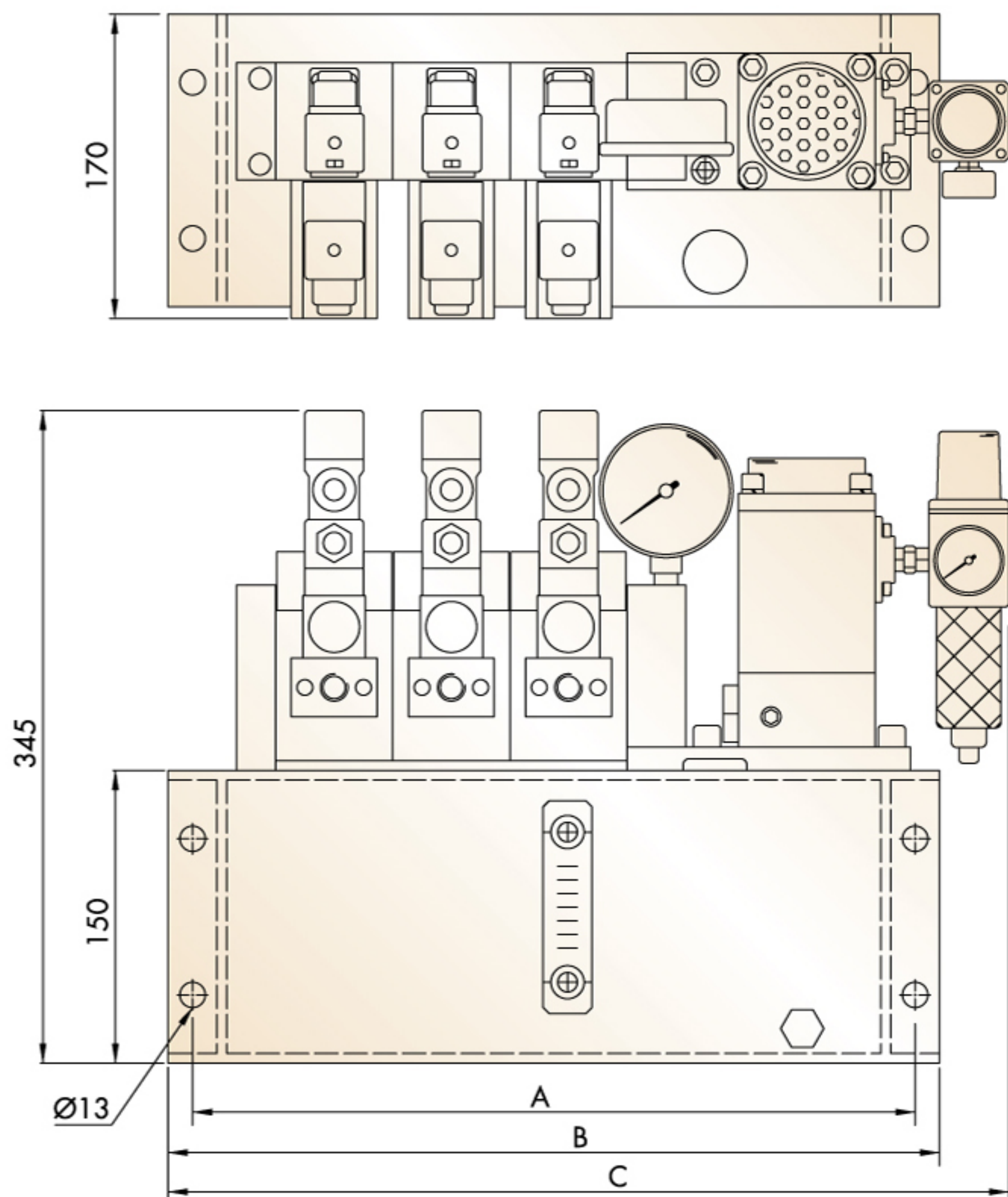
Model 型式	迴路數Number Of Circuit	迴路分配使用情形 System Configuration
<b>PF08-110</b> 	1	<ul style="list-style-type: none"> <li>● 單一供上模或下模夾具 Single for the operation of the die clamp on the upper or lower die.</li> <li>● 上下模夾具使用同一迴路 The operations of the upper and lower die clamps use the same circuit.</li> </ul>
<b>PF08-101</b> 	1	<ul style="list-style-type: none"> <li>● 單一供舉模器 Single for the operation of the die lifter.</li> </ul>
<b>PF08-220</b> 	2	<ul style="list-style-type: none"> <li>● 上下模夾具各自迴路分開 Separated circuit operation for upper and lower die clamps.</li> </ul>
<b>PF08-211</b> 	2	<ul style="list-style-type: none"> <li>● 上下模夾具使用同一迴路 The operations of the upper and lower die clamps use the same circuit.</li> <li>● 一迴路供舉模器 One circuit is for die lifter.</li> </ul>
<b>PF08-321</b> 	3	<ul style="list-style-type: none"> <li>● 上下模夾具各自迴路分開 Separated circuit operation for upper and lower die clamps.</li> <li>● 一迴路供舉模器 One circuit is for die lifter.</li> </ul>
<b>PF08-431</b> 	4	<ul style="list-style-type: none"> <li>● 二迴路使用於夾持上模交叉方式， 另一個迴路使用於夾持下模且第四個迴路使用於舉模器 Two circuit for clamping the upper die. One circuit for clamping the lower die. One circuit for the die lifter.</li> </ul>



氣動油壓泵浦單體 AIR DRIVE HYDRAULIC PUMP



OUTLINE DIMENSIONS 外型尺寸



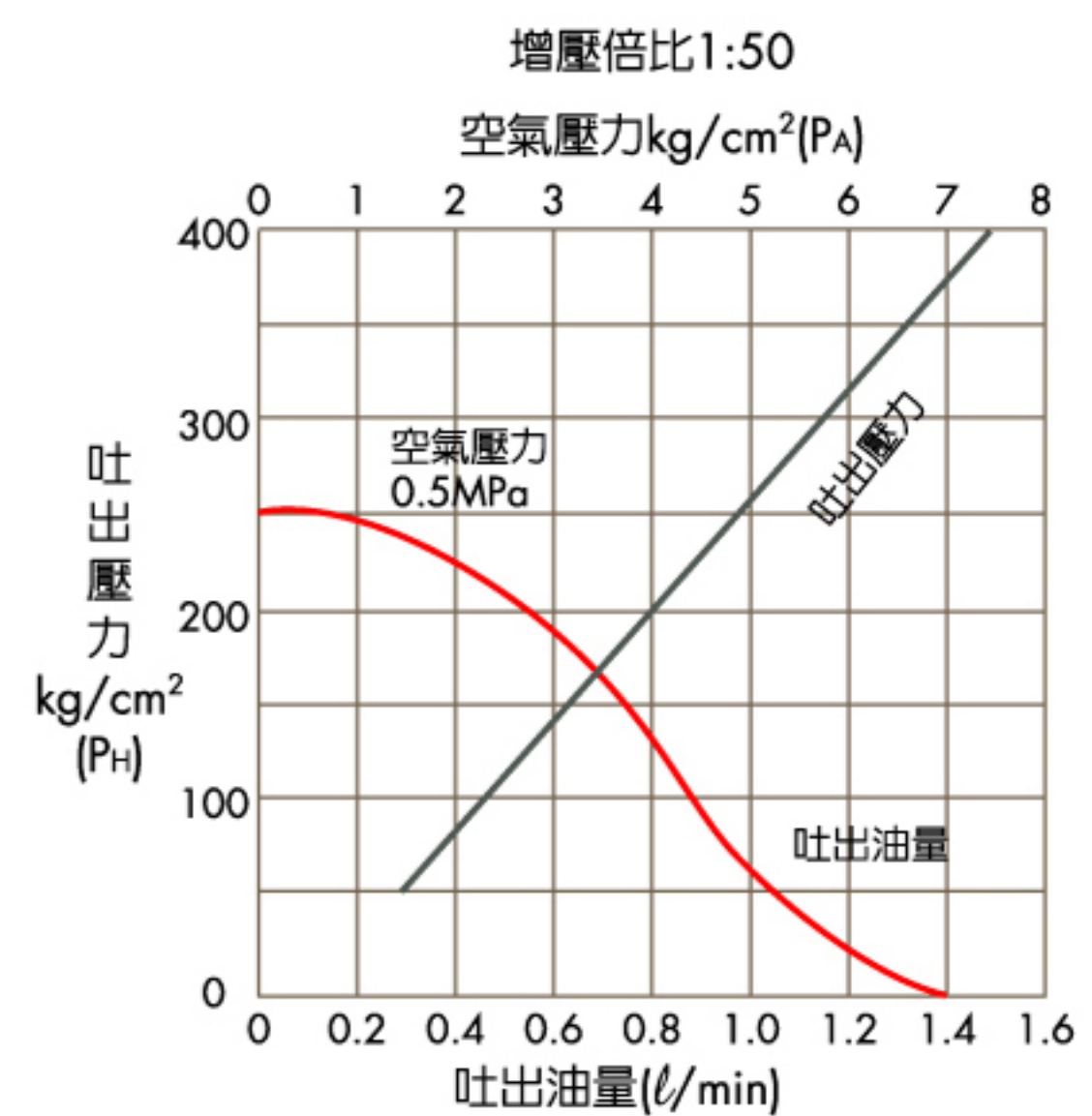
Unit:mm

Model 型式	A	B	C
PF08-1 □ □	250	275	315
PF08-2 □ □	310	335	375
PF08-3 □ □	370	395	435
PF08-4 □ □	463	488	528

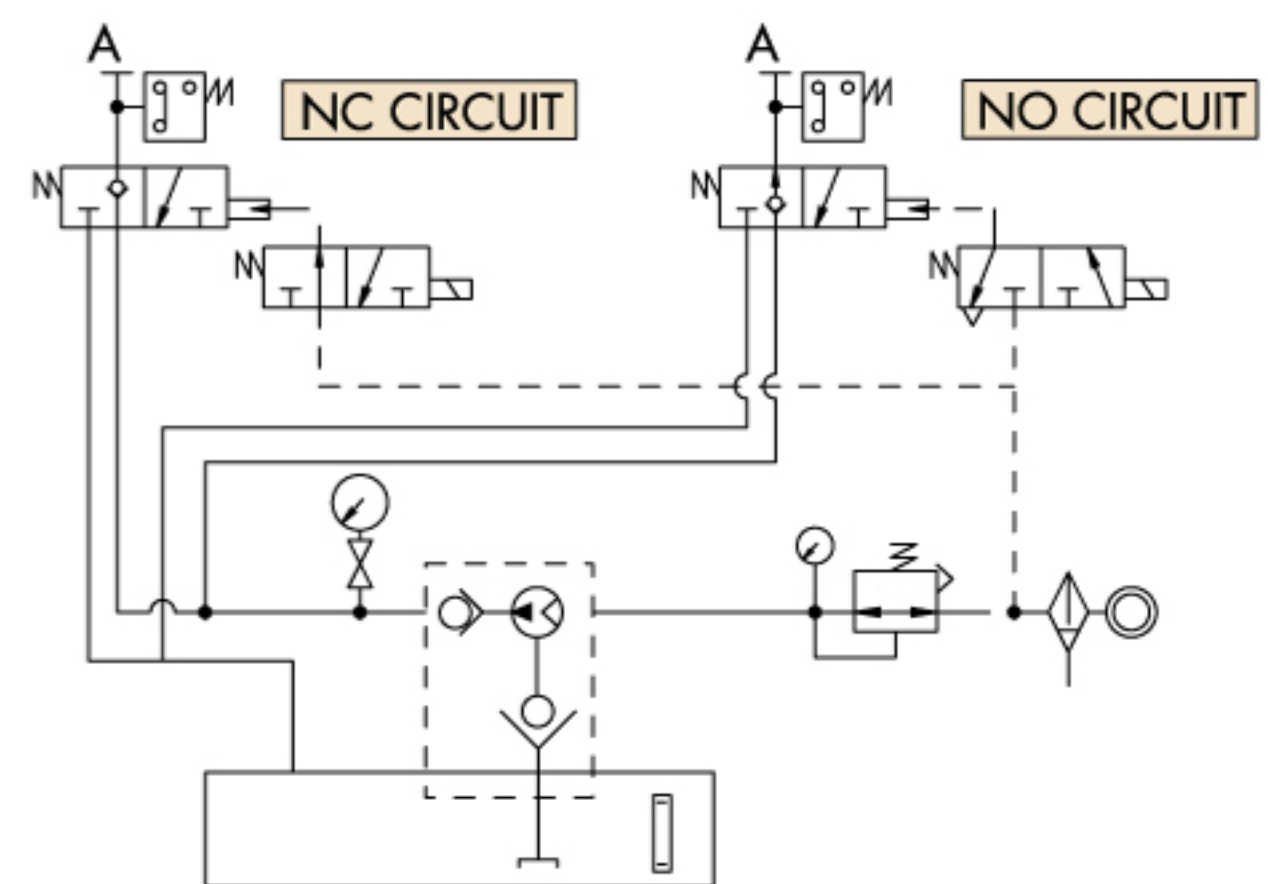
PF08 泵浦特性規格

吐出油壓壓力	250 kgs/cm <sup>2</sup>
使用空氣壓力	4.8 kgs/cm <sup>2</sup>
使用油	ISO VG32液壓油
單一重量	2.8 kgs
使用溫度	-5~60°C

PF08 流動特性



CIRCUIT CONTROL SYSTEM 迴路控制系統



- Pump is driven by air and produces high hydraulic pressure.
- Pressure is adjusted by an air-adjusting valve. When pressure reaches multiples of super charge, the air valve will stop operation.
- Hydraulic pressure will maintain for a long time even when there is a power failure or the air pressure disappears.
- It goes with the different pumps and models of circuit control system based on the needs.
- 利用空氣壓驅動泵浦產生高油壓壓力。
- 以空氣調壓閥調整壓力達增壓倍數即停止驅動。
- 臨時停電或空氣壓力消失時，油壓壓力仍能長時間保持。
- 可依需要搭配不同出力之泵浦及不同型式之迴路控制系統。

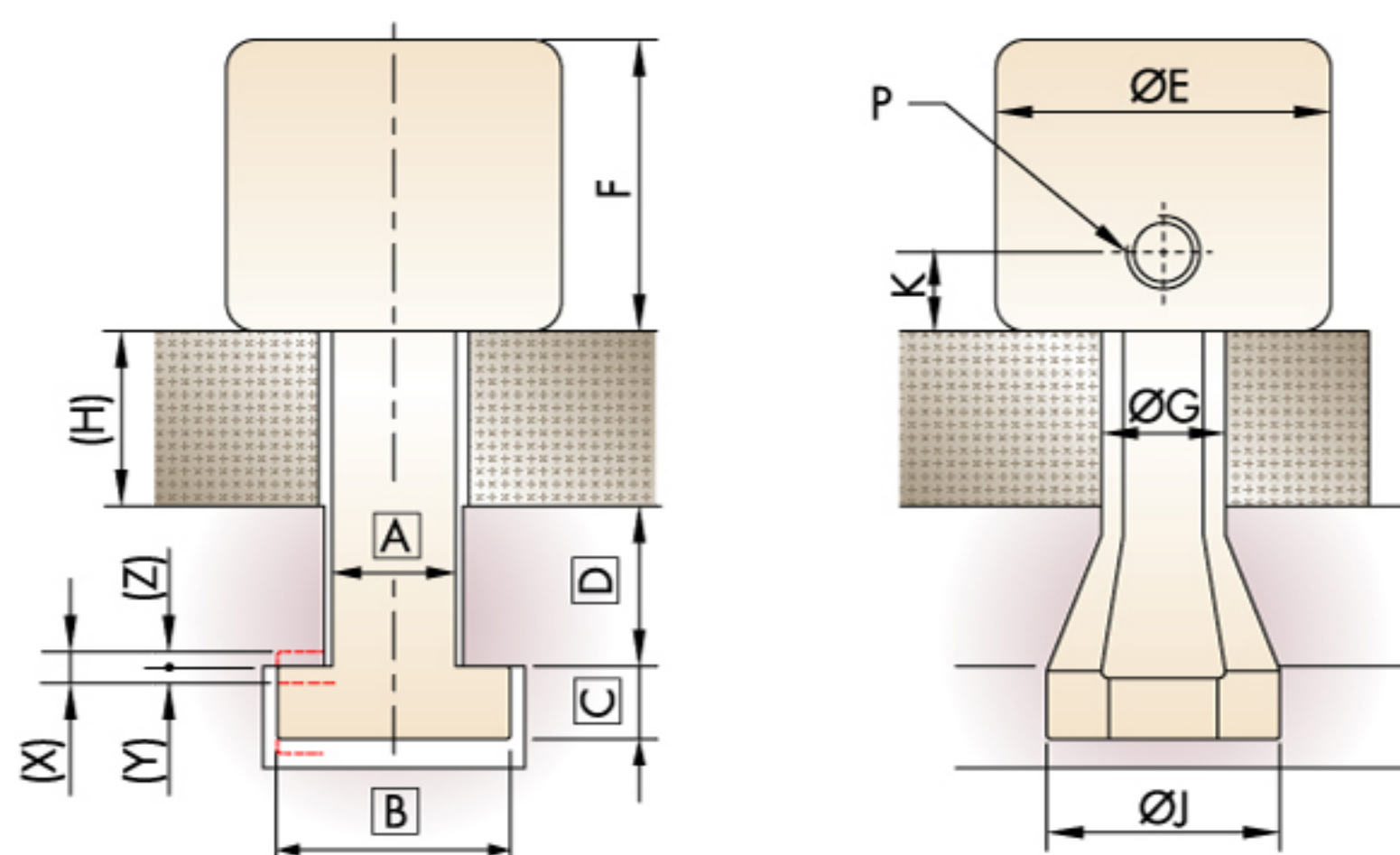


夾模器 DIE CLAMP

直拉式 PISTON TYPE: TA



OUTLINE DIMENSIONS ■ 外型尺寸



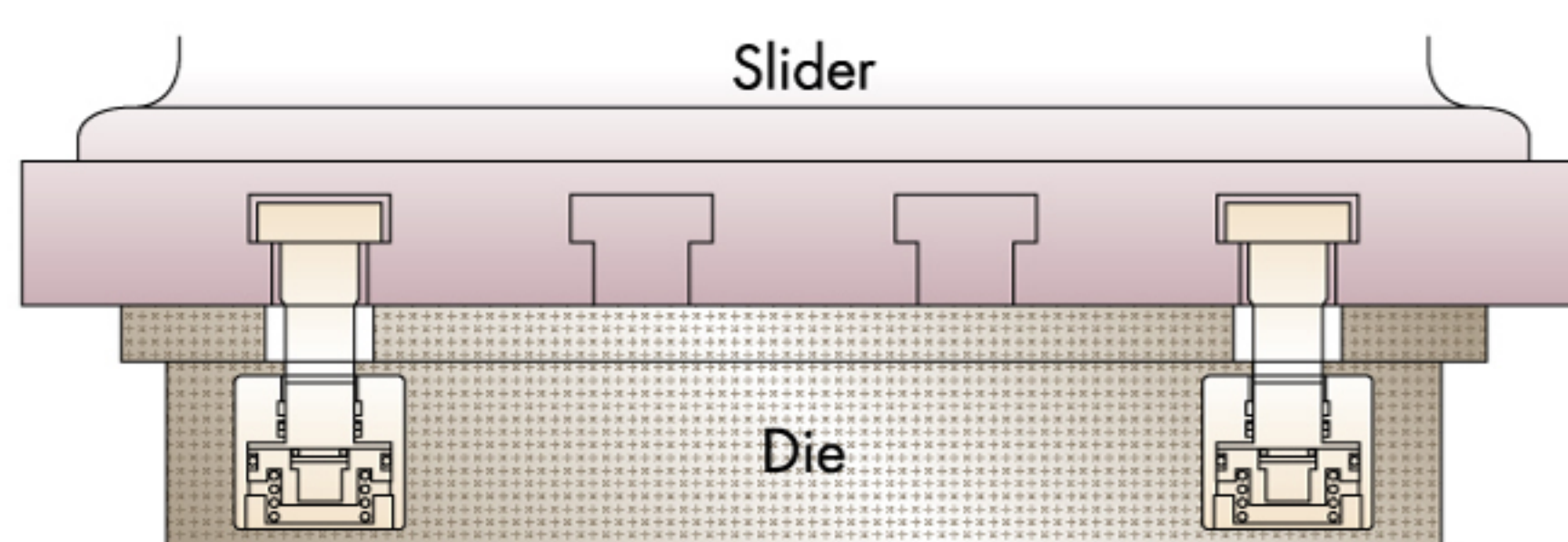
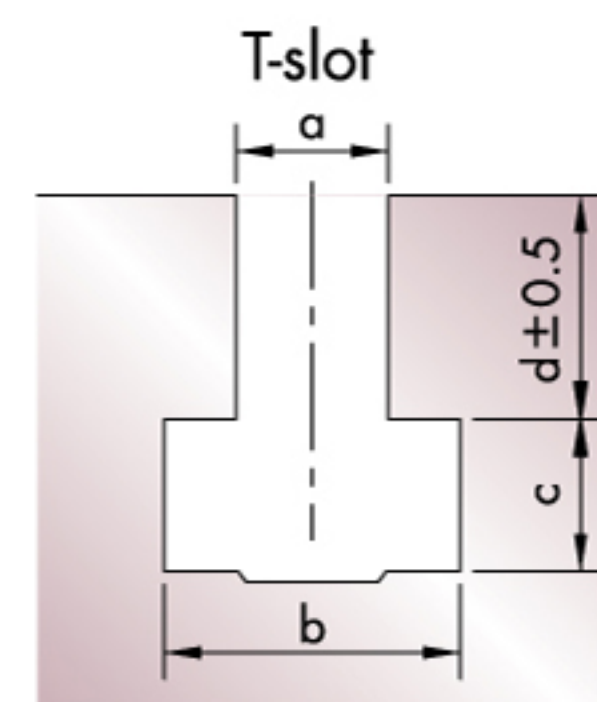
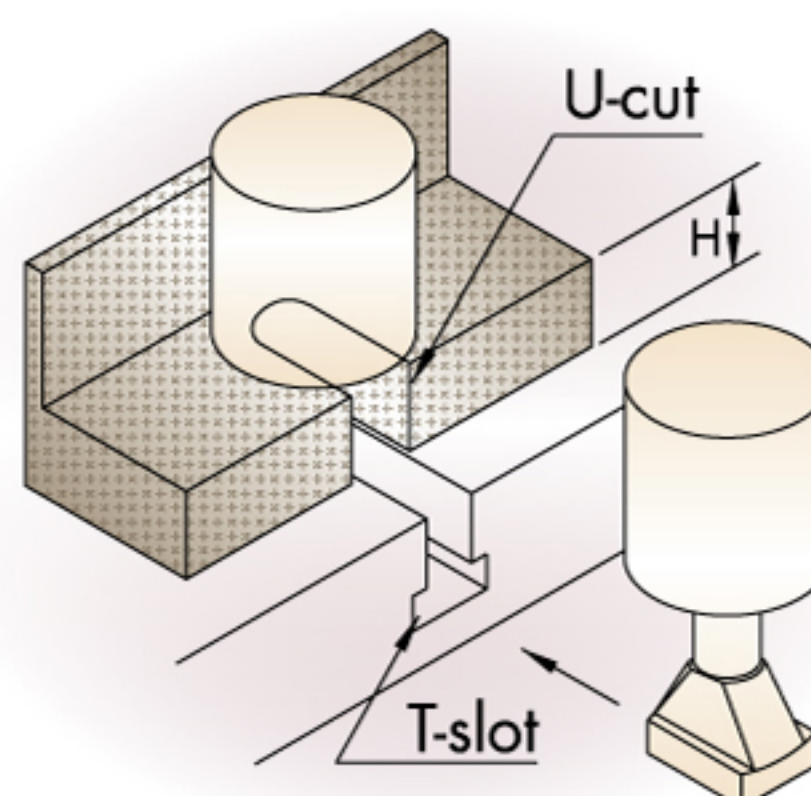
- This compact piston-type clamp is space-efficient. It requires U-cuts on the die shoe.
- The leg of the clamp is machined to fit T-slot on the bolster.
- 使用TA型夾具，模具須有U型溝。
- TA型夾具是活塞式的構造。

INSTRUCTION OF SPECIFICATION 規格說明

Model 型式			TA-01	TA-02	TA-04	TA-06	TA-10	TA-16	TA-25
Clamping Force (at 250 Kg/cm <sup>2</sup> )	tons	夾緊力量	1	2	4	6	10	16	25
Full Stroke(X)	mm	總行程(X)	6	8	8	8	8	8	8
Clamping Stroke (Y)	mm	夾緊行程(Y)	3	4	4	4	4	4	4
Extra Stroke (Z)	mm	餘留行程(Z)	3	4	4	4	4	4	4
Cylinder Capacity At Full Stroke	cc	總行程用油量	3	7	13	21	32	54	80
Minimum T-slot "a" Dimensions	T型槽"a"最小尺寸		8	12	16	18	22	28	36
E(Min)	mm		40	53	65	82	99	126	150
G	mm		13	18	25	32	40	50	60
J	mm		30	48	58	64	78	88	98
K	mm		9.5	12	15	15	15	17	23
F	mm		39	52	58	65	71	82	100
P	PT	入油孔徑	1/8	1/8	1/4	1/4	1/4	1/4	1/4

Unit:mm

- Please indicate the size of T-slot(a,b,c,d) and the thickness (H) of the template for die clamp mold when purchasing.
- The sizes of clamps A,B,C and D are made based on the size of T-slot.
- 訂購時請指明T槽尺寸(a,b,c,d)及夾模處模板厚度(H)。
- 夾具A,B,C,D尺寸係配合T槽尺寸製作。



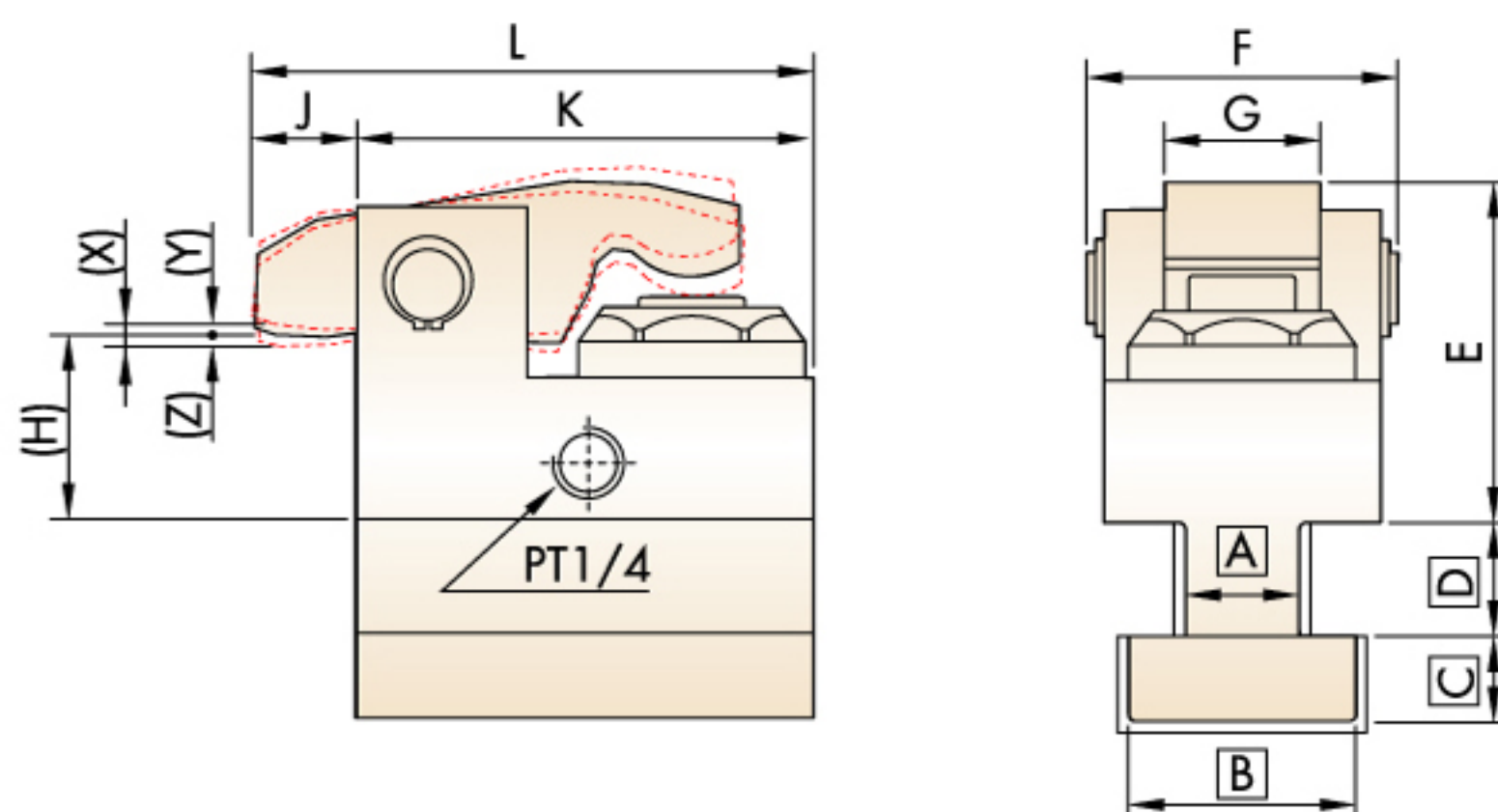


### 夾模器 DIE CLAMP

壓板式 LEVER TYPE: **TB**



### OUTLINE DIMENSIONS · 外型尺寸

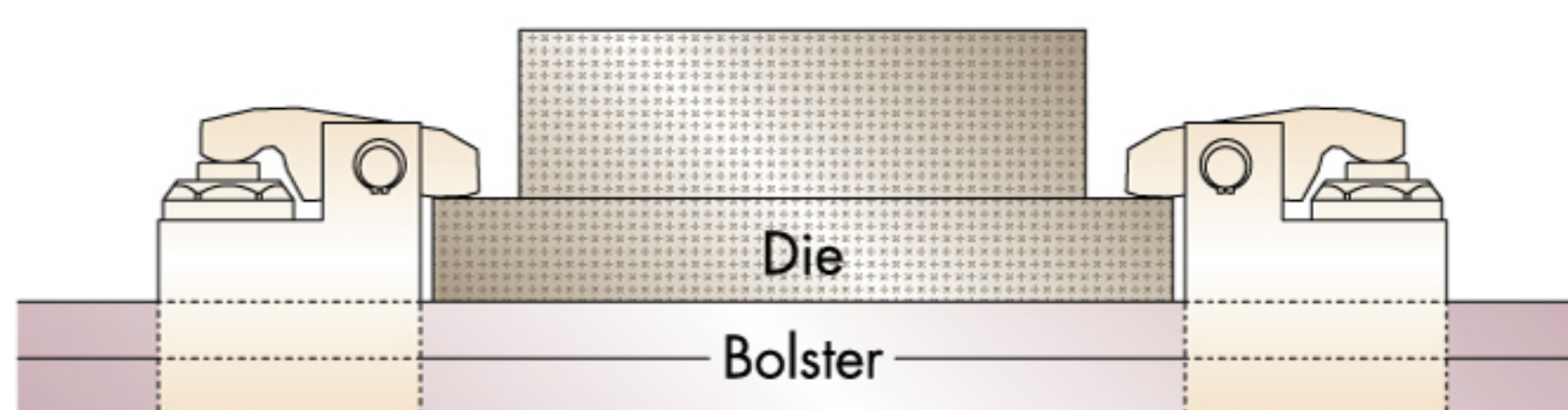
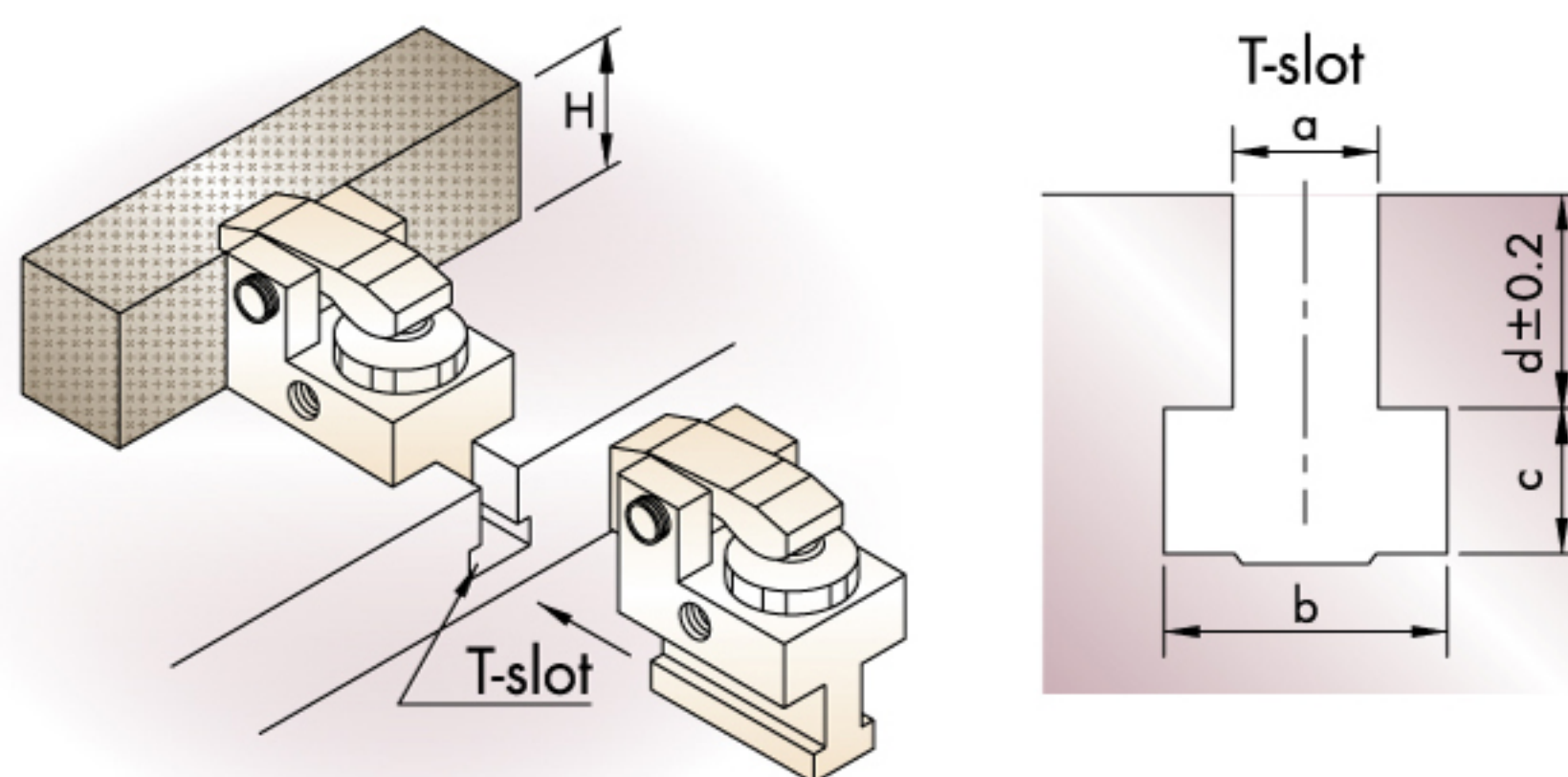


- Because this lever-type clamp does not requires a U-cut on the die shoe, it may be used in a wide range of applications.
- The base of the clamp is machined to fit the T-slot on the bolster.
- 使用TB型夾具，模具不須有U形溝，應用範圍比較廣泛。
- TB型夾具是槓桿式的構造。

### INSTRUCTION OF SPECIFICATION 規格說明

Model 型式			Unit:mm						
			TB-01	TB-02	TB-04	TB-06	TB-10	TB-16	TB-25
Clamping Force (at 250 Kg/cm <sup>2</sup> )	tons	夾緊力量	1	2	4	6	10	16	25
Full Stroke(X)	mm	總行程(X)	6	8	8	8	8	8	8
Clamping Stroke (Y)	mm	夾緊行程(Y)	3	4	4	4	4	4	4
Extra Stroke (Z)	mm	餘留行程(Z)	3	4	4	4	4	4	4
Cylinder Capacity At Full Stroke	cc	總行程用油量	3.5	7	13.5	21.5	38	56	97
Minimum T-slot "a" Dimensions	T型槽"a"最小尺寸		10	14	18	21	23	28	35
Minimum T-slot "c" Dimensions	T型槽"c"最小尺寸		6.5	9.5	12	14	16.5	19	22
E(Min)	mm		42	73	77	92	114	126	148
J	mm		15	21	25	30	30	32	32
K	mm		60	88	110	130	160	200	235
L	mm		75	109	135	160	190	232	267
F	mm		44	68	79	96	117	129	156
G	mm		20	32	40	46	54	58	70
P	PT	入油孔徑	1/8	1/4	1/4	1/4	1/4	1/4	1/4

- Please indicate the size of T-slot(a,b,c,d) and the thickness (H) of the template for die clamp mold when purchasing.
- The sizes of clamps A,B,C and D are made based on the size of T-slot.
- 訂購時請指明T槽尺寸(a,b,c,d)及夾模處模板厚度(H)。
- 夾具A,B,C,D尺寸係配合T槽尺寸製作。





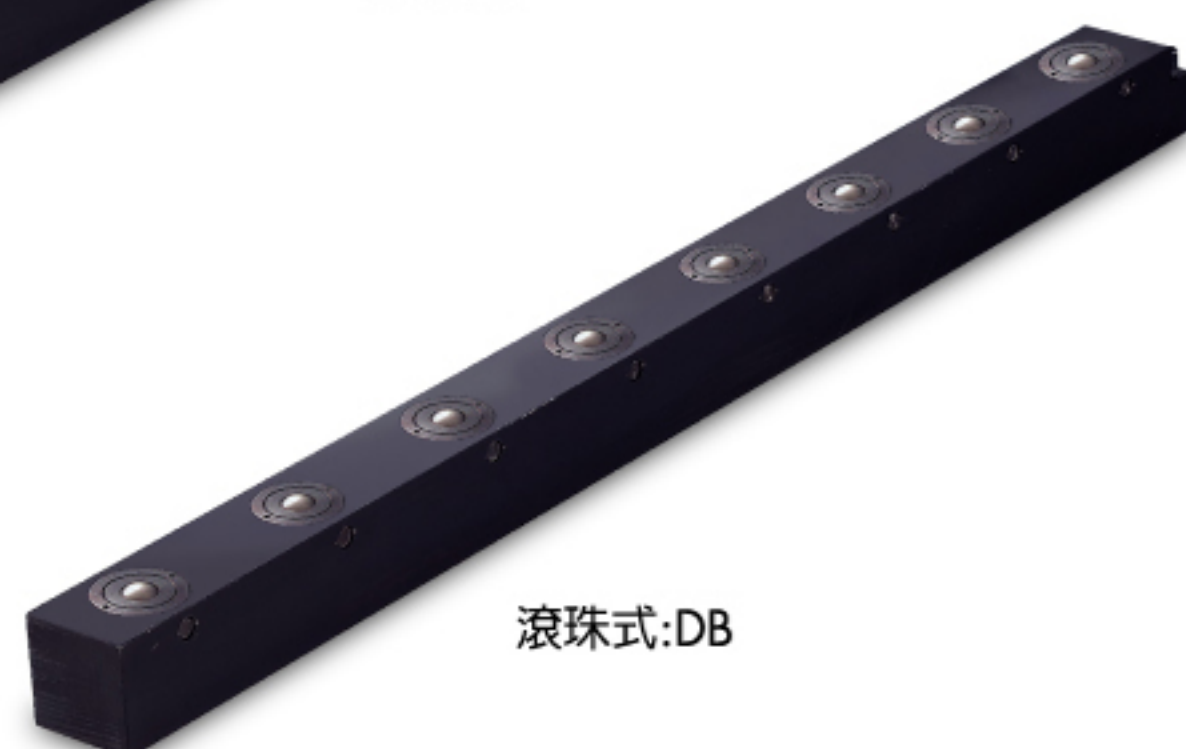
# 舉模器 DIE LIFTER

滾輪油壓式ROLL TYPE: **DL**

滾珠油壓式BALL TYPE: **DB**

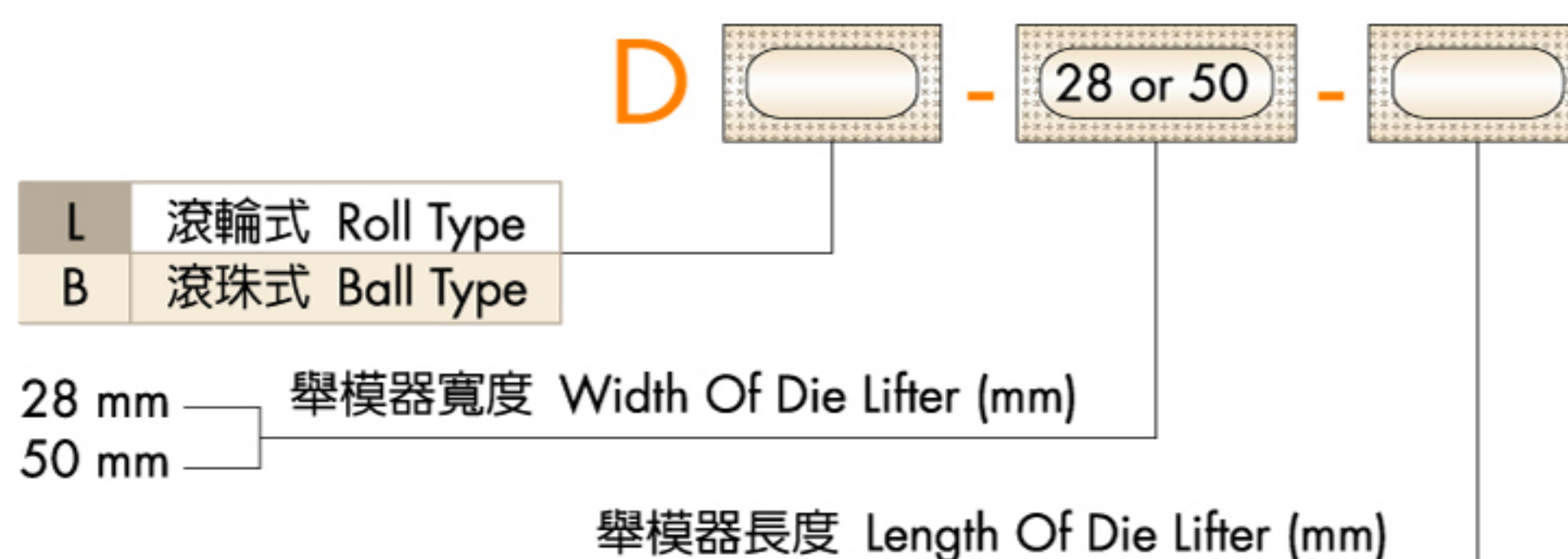


滾輪式:DL



滾珠式:DB

## THE CHOICE OF THE MODEL · 形式選定



## SPECIFICATION 特性規格

基本形式	Basic Model	DL-28	DL-50
工作油壓 (kgf/cm <sup>2</sup> )	Working Hydraulic Pressure	250	250
單一油壓缸舉力 (tons)	Lifting Force Per Cylinder Tons	0.45	1.1
總上升行程 (mm)	Total Stroke	3	3
每只滾輪最大載模能力 (kg)	Roller Max. Load Cap	80 模具材質:SS41	200 模具材質:SS41
		140 模具材質:S45C	350 模具材質:S45C

## D□-28 Model型式

## INSTRUCTION OF SPECIFICATION 規格說明

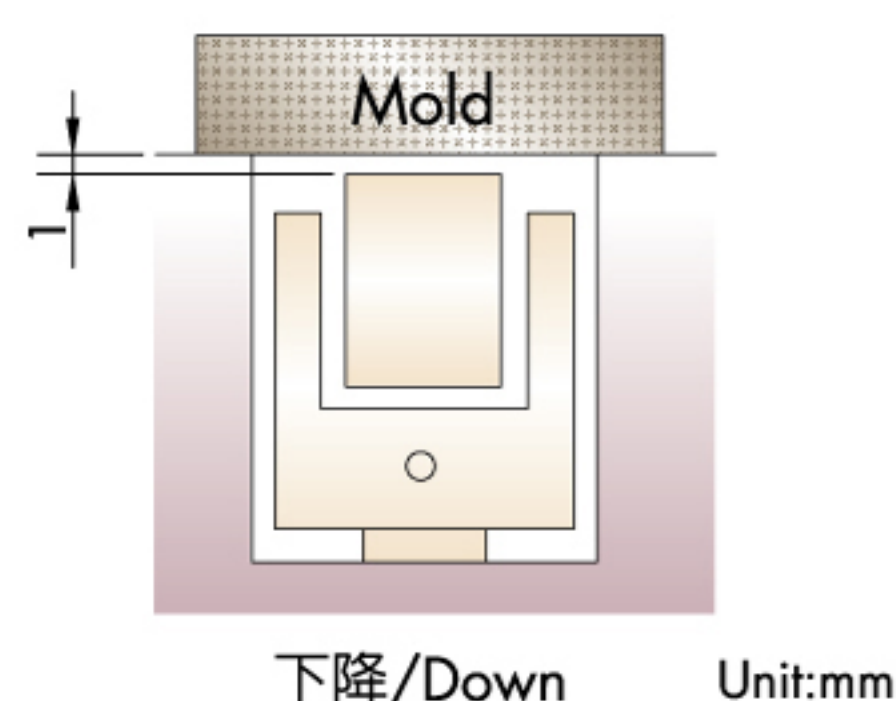
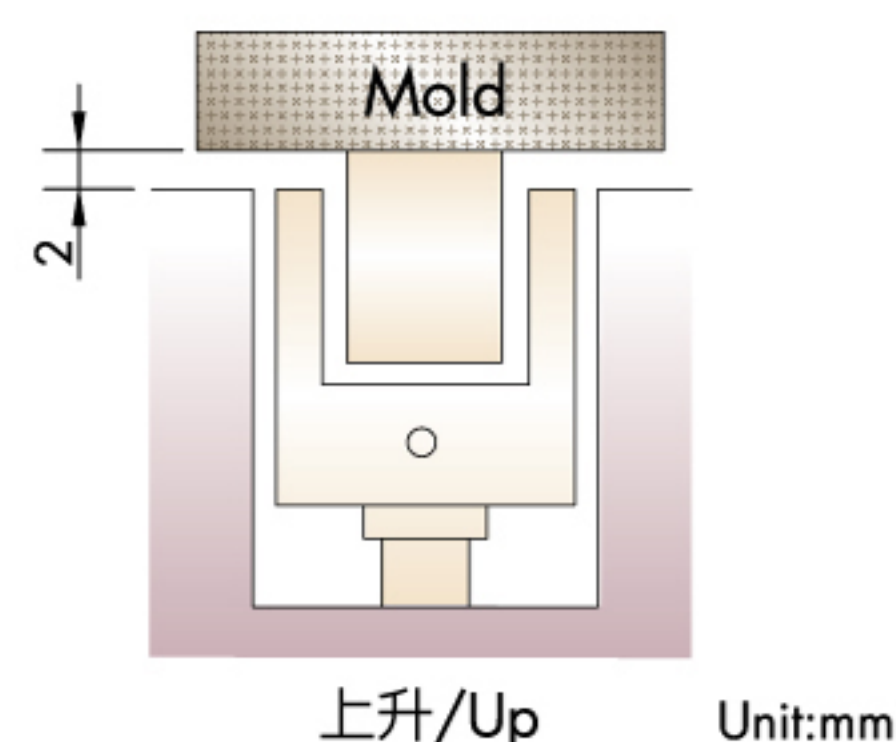
舉模器長度	Length Of Die Lifter	(mm)	300	400	500	600	700	800	900	1000	1100	1200	1300	1400	1500
滾輪數	Roller	(DL)	5	6	8	9	11	12	14	15	16	17	18	19	20
滾珠數	Ball	(DB)	7	10	12	15	17	20	22	25	27	30	32	35	37
油壓缸數	Hydraulic Cylinger	(Pcs.)	2		3		4		5		6				
舉模能力	Working Pressure	(Kgf)	900		1350		1800		2250		2700				

## D□-50 Model型式

## INSTRUCTION OF SPECIFICATION 規格說明

舉模器長度	Length Of Die Lifter	(mm)	300	400	500	600	700	800	900	1000	1100	1200	1300	1400	1500
滾輪數	Roller	(DL)	3	4	5	6	7	8	9	10	11	12	13	14	15
滾珠數	Ball	(DB)	5	7	9	10	12	14	16	17	19	21	22	24	26
油壓缸數	Hydraulic Cylinger	(Pcs.)	2		3		4		5		6				
舉模能力	Working Pressure	(Kgf)	2200		3300		4400		5500						

Any specific size is available based on the needs of the customers. 可依客戶使用需要製作特殊規格



Outline Dimensions · 外型尺寸	Processing Size For Plate · 台盤加工尺寸(U-Slot)
<b>D□-28</b> 	
<b>D□-50</b> 	



舉模器 DIE LIFTER

滾輪彈簧式ROLL TYPE: **DLS**

THE CHOICE OF THE MODEL · 形式選定



**DLS** -

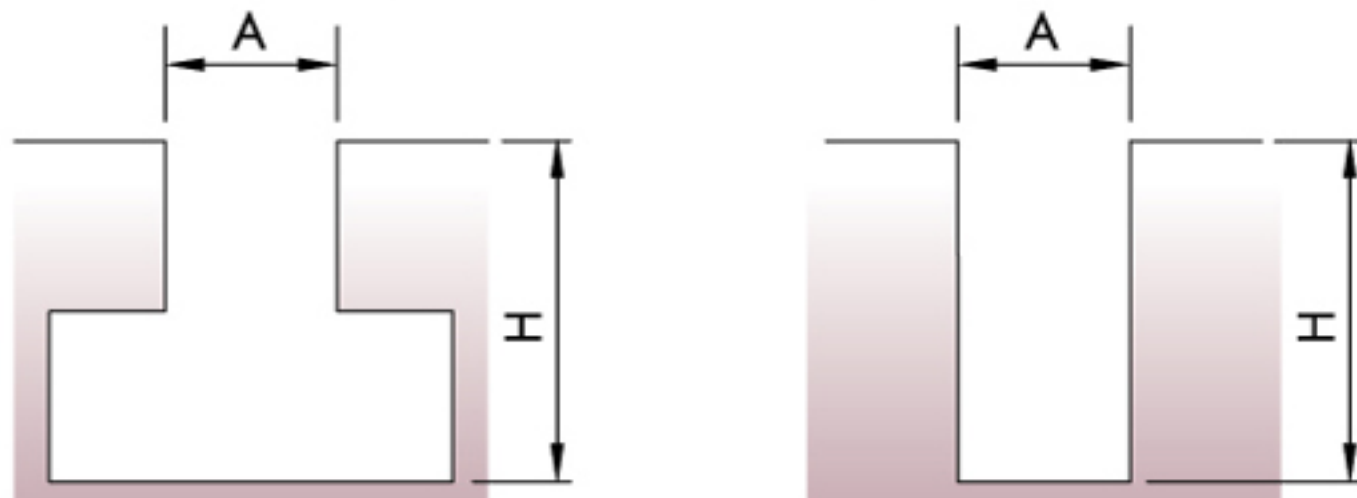
18 mm  
22 mm  
28 mm

舉模器寬度Width Of Die Lifter (mm)

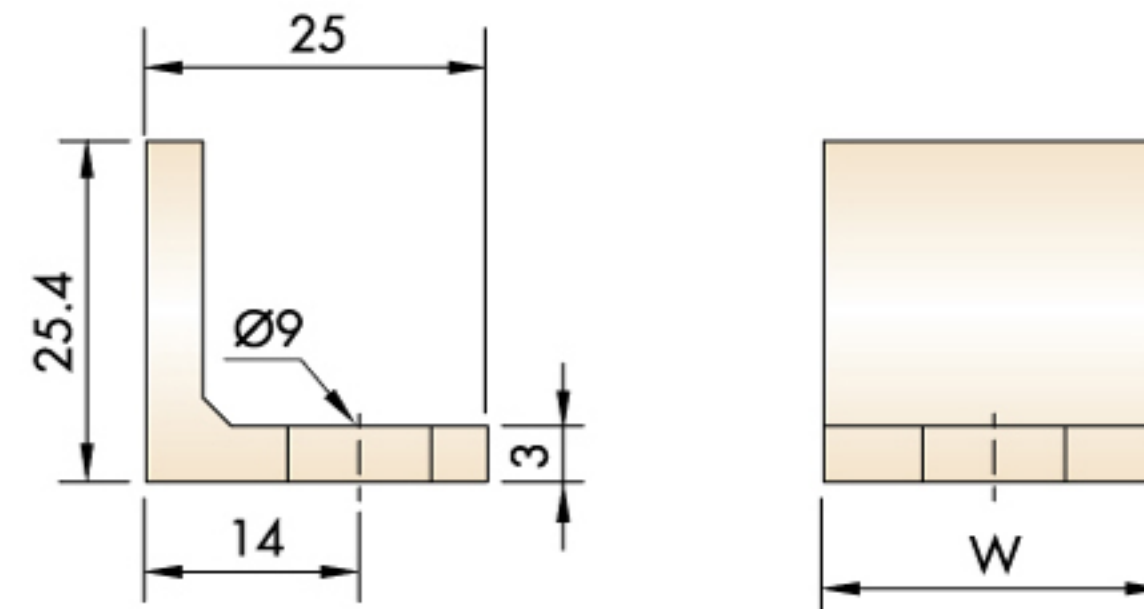
200 mm  
300 mm

舉模器長度Length Of Die Lifter (mm)

T/U溝尺寸 ● T-Slot/U-Slot



固定板 ● End Plant



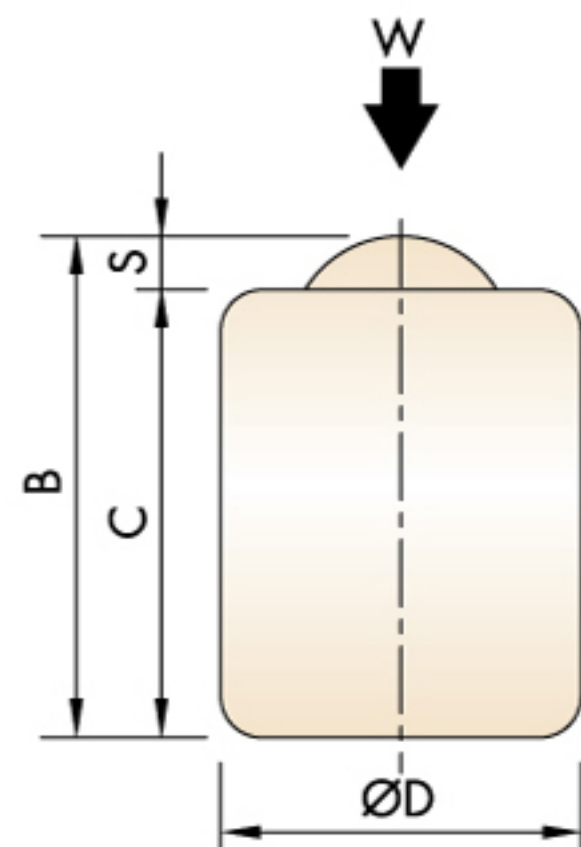
INSTRUCTION OF SPECIFICATION 規格說明

型式	Model	Unit	DLS18-200	DLS18-300	DLS22-200	DLS22-300	DLS28-200	DLS28-300
彈簧數	Spring	(Pcs)	4	6	4	6	4	6
滾輪數	Roller	(Pcs)	2	3	3	5	3	5
單一彈簧舉模力	Lift Force	(Kgf)	30	30	37.5	37.5	75	75
溝槽寬度	Width Of Slot	(A)	18	18	22	22	28	28
溝槽高度	Height Of Slot	(H)	31~43		35~43		44~58	
固定板寬度	Width Of Slot	(W)	17		21			

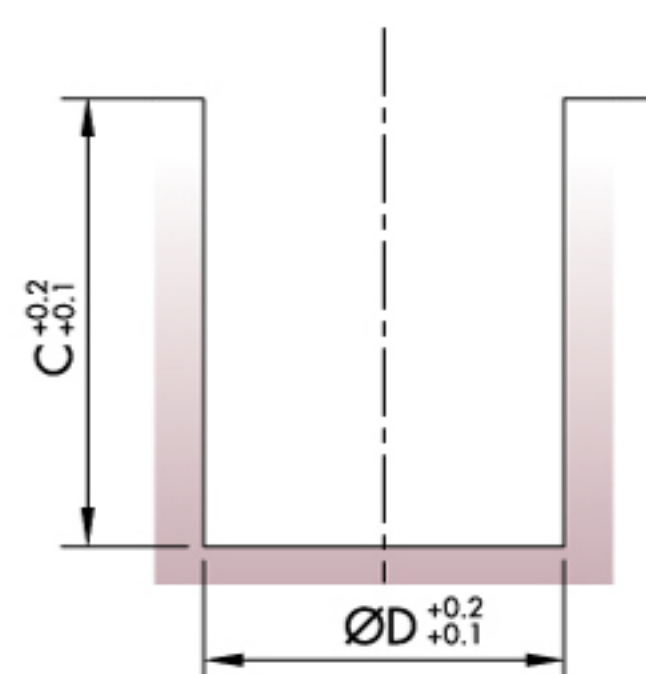
- Please Clearly Indicate: (a) The Slot Height. (b) The Equipped Length Of Every Slot While Ordering. (c) Quantity Of End Plant.
- 訂購確認: (a) 溝槽高度(H) (b) 溝槽裝配長度 (c) 固定板數量

舉模器 DIE LIFTER

滾珠彈簧式BALL TYPE: **DS**



● 外型尺寸 ●  
Outline Dimensions



● 台盤加工尺寸(U-Slot) ●  
Processing Size For Plate

SPECIFICATION 特性規格

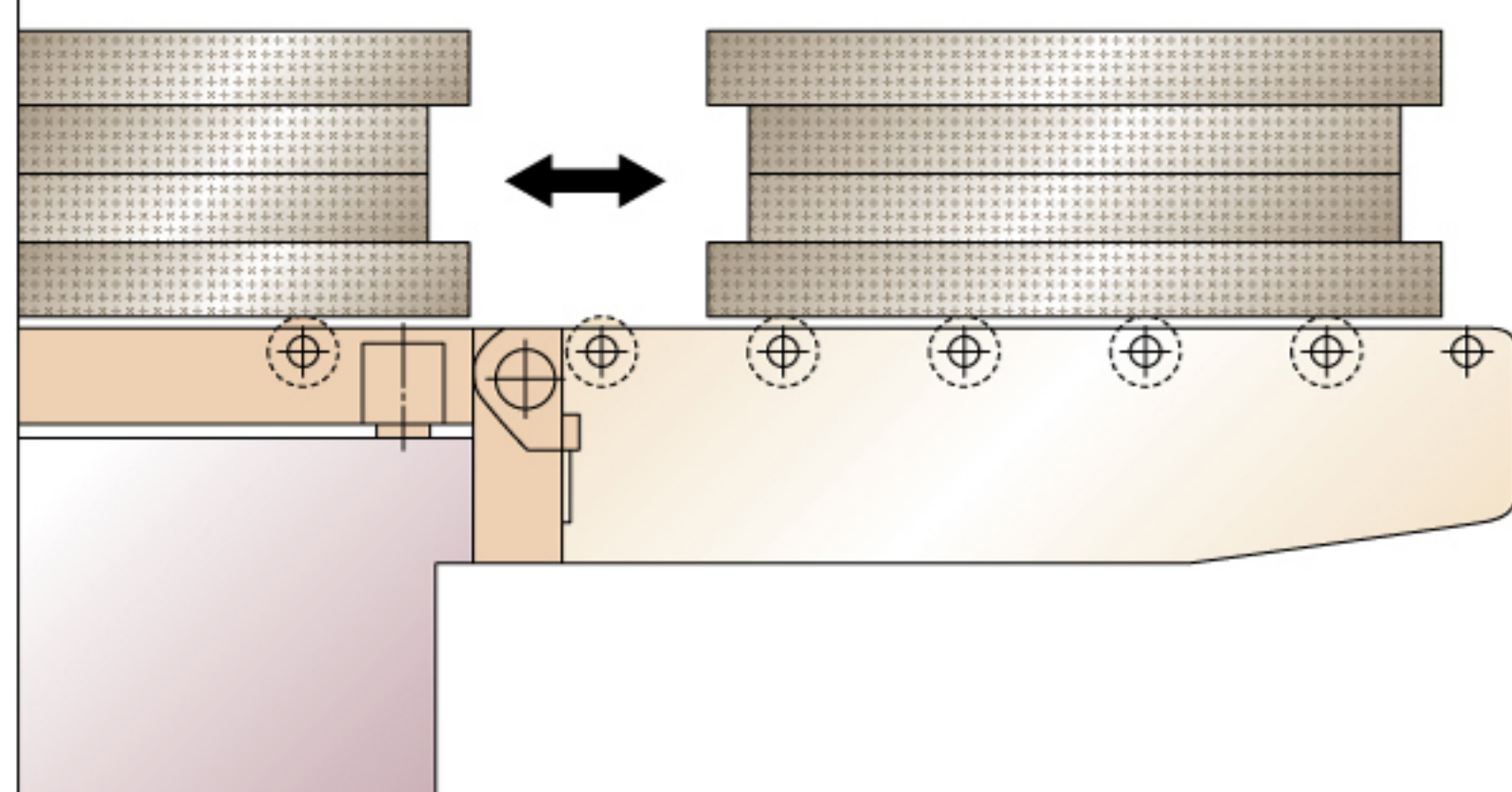
型式	Model	Unite	DS-100	DS-200
ØD	(mm)		38	45
C	(mm)		35	42
B	(mm)		38	45
S	(mm)		3	3
W	(kgs)		100	200



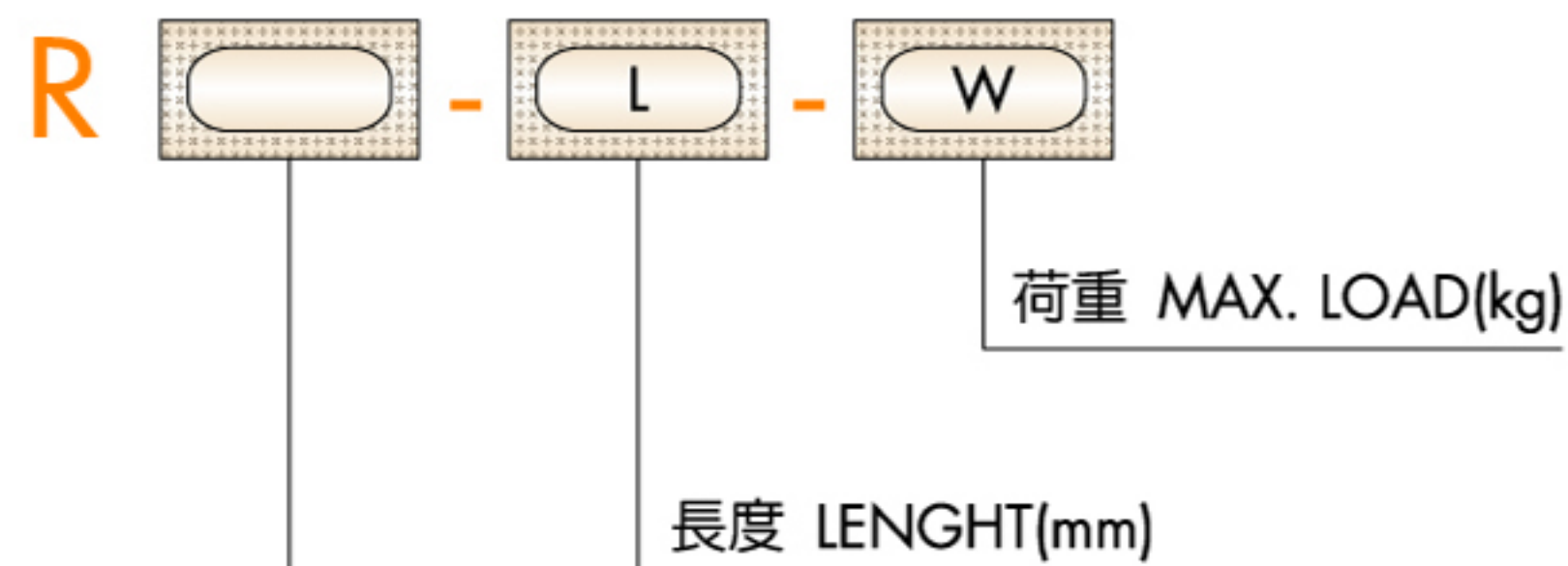
■ 移模臂 BOLSTER EXTENSIONS

拆卸式DISMANTLING: **RC** 折疊式FOLDING: **RE/RF**

折掛式HANGING: **RD** 支柱式SUPPORTER: **RS**

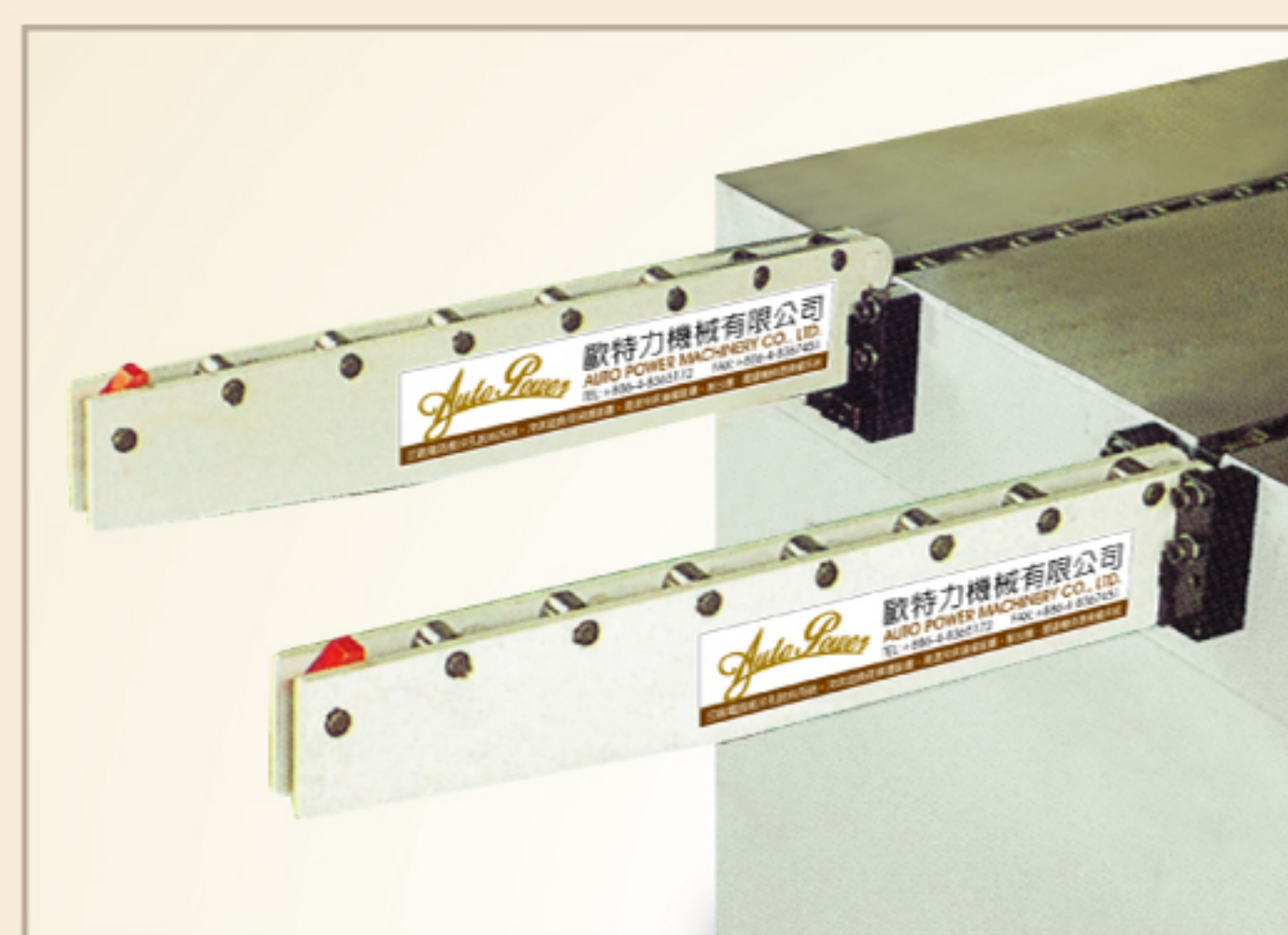
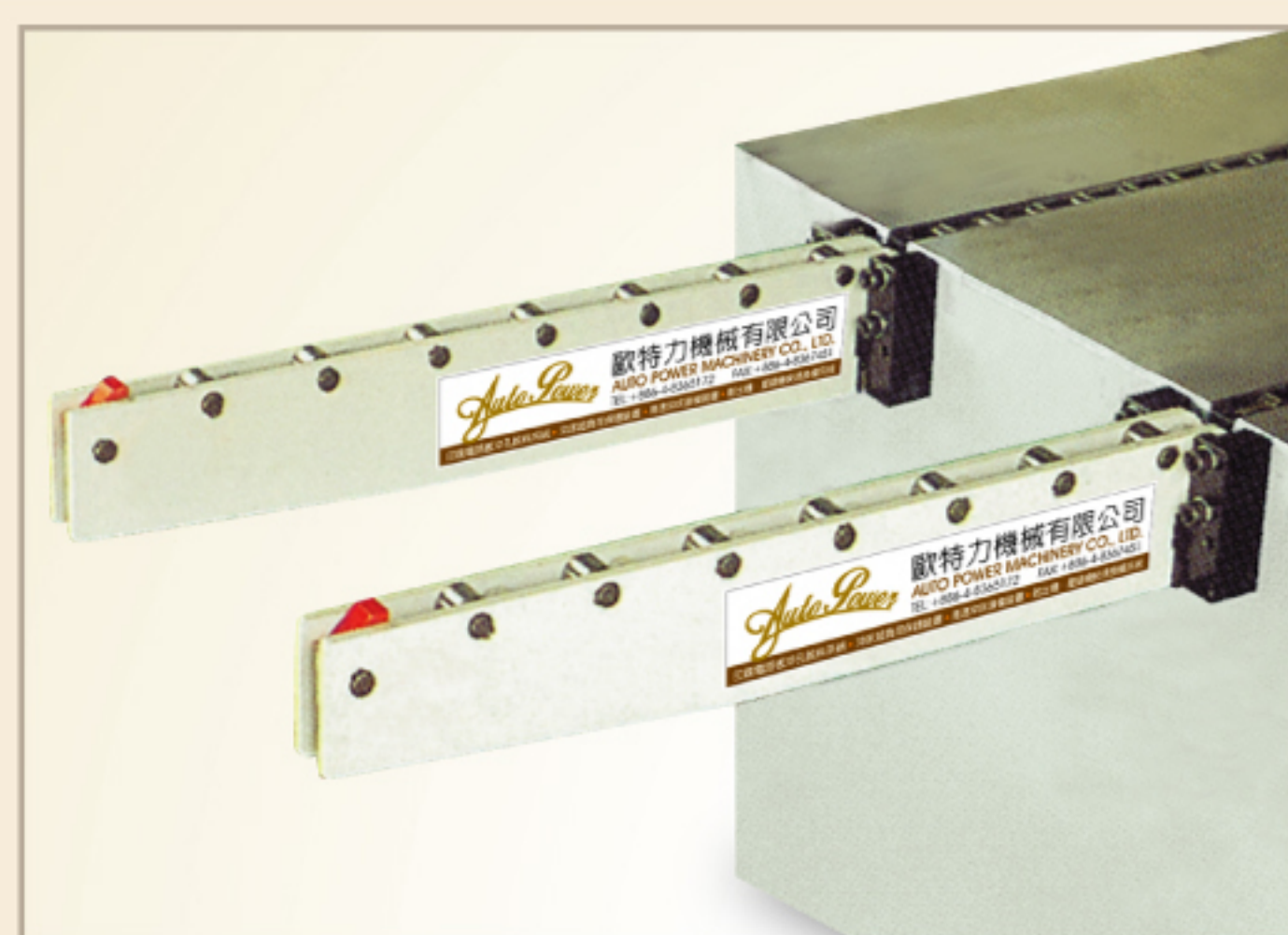


THE CHOICE OF THE MODEL · 形式選定

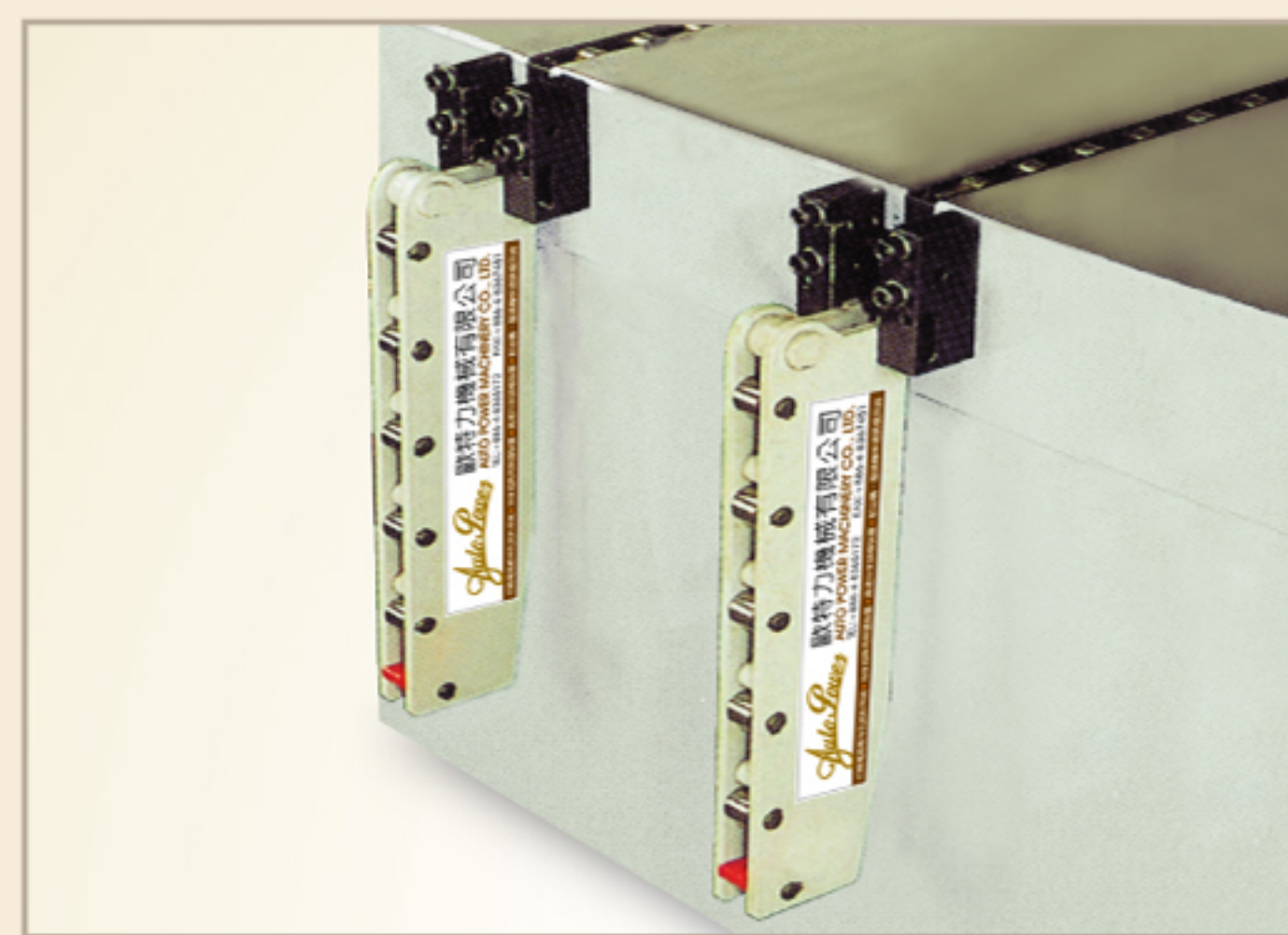
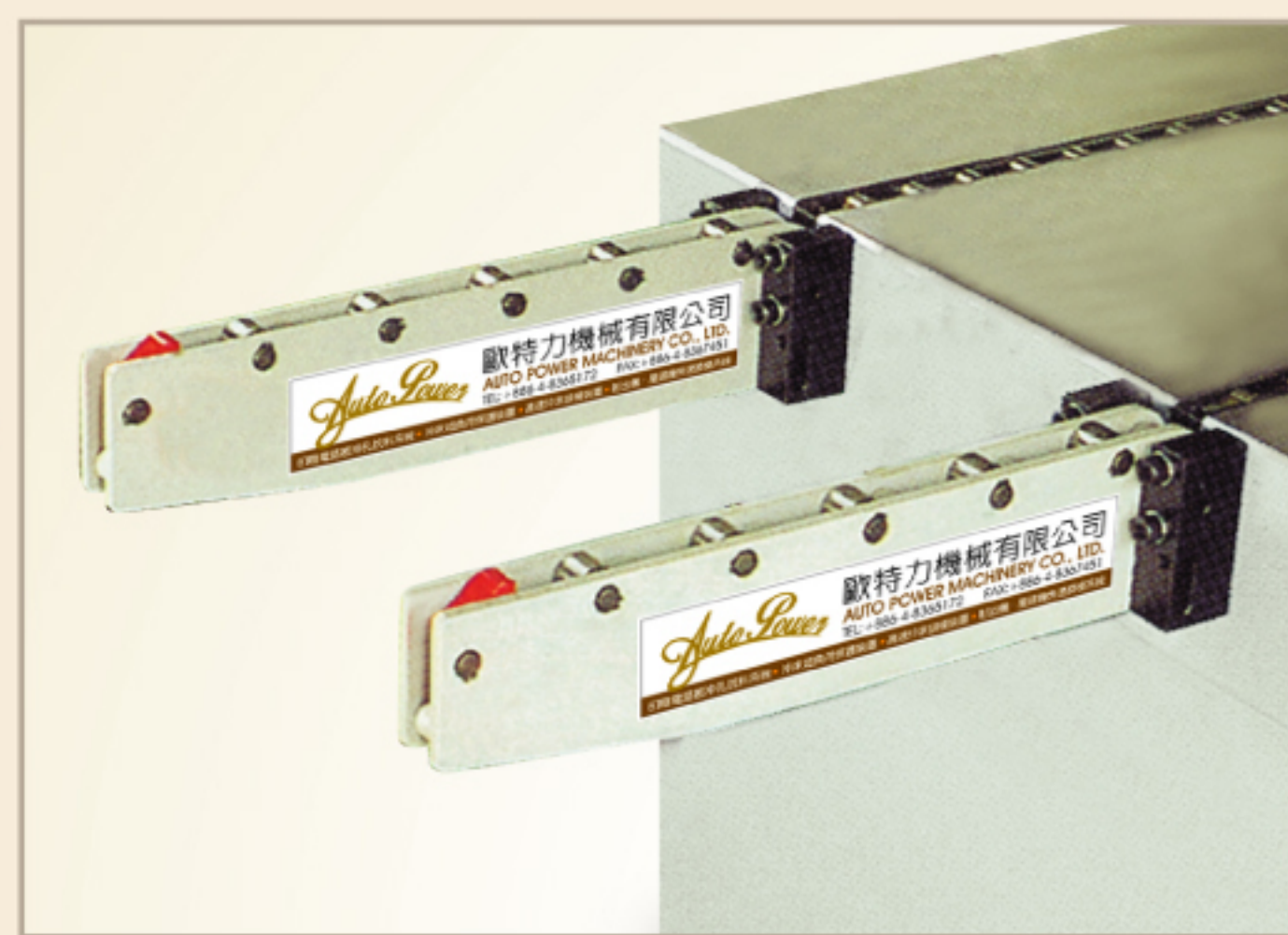


C	拆卸式 DISMANTLING
D	折掛式 HANGING
E/F	折疊式 FOLDING

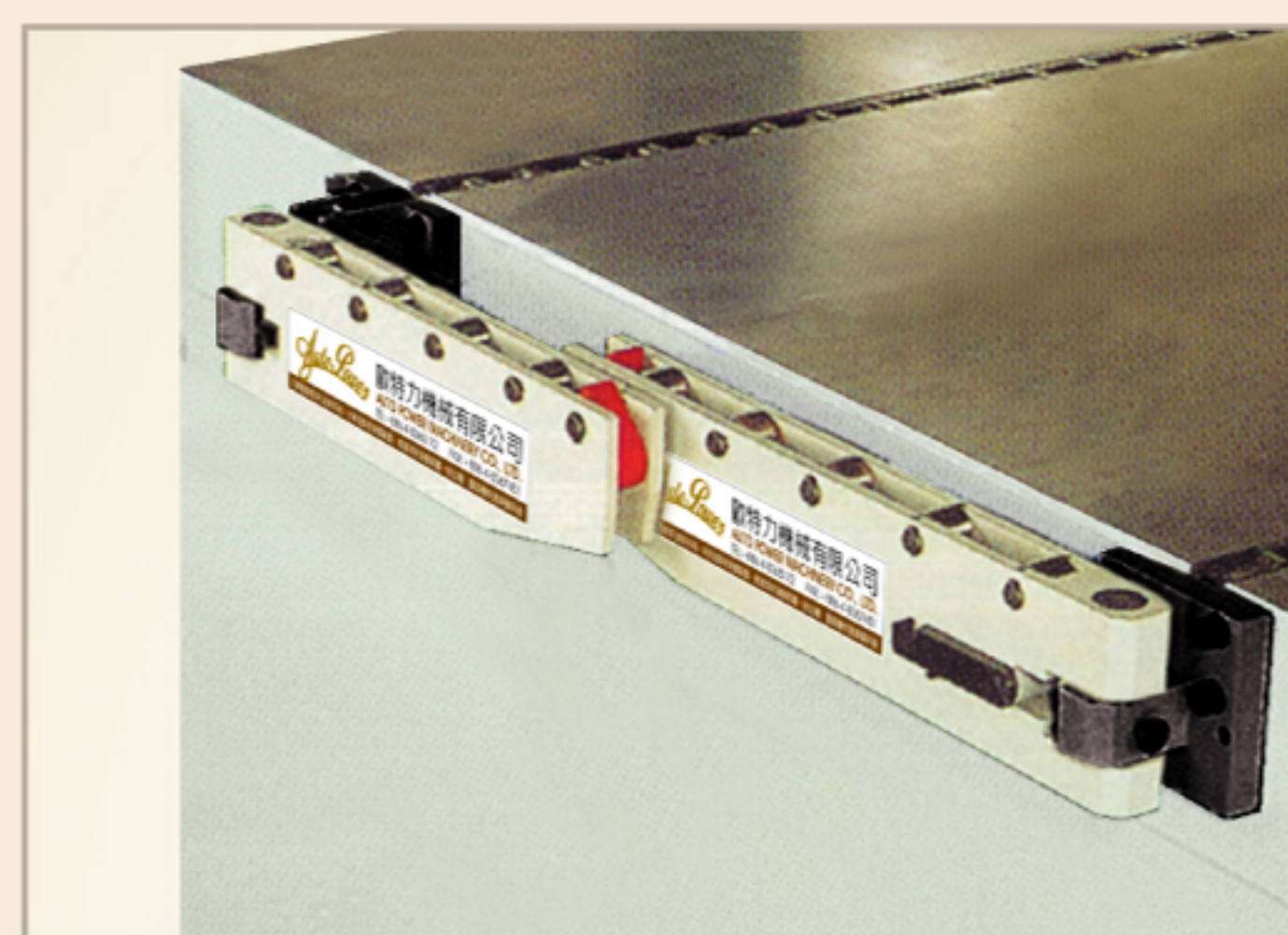
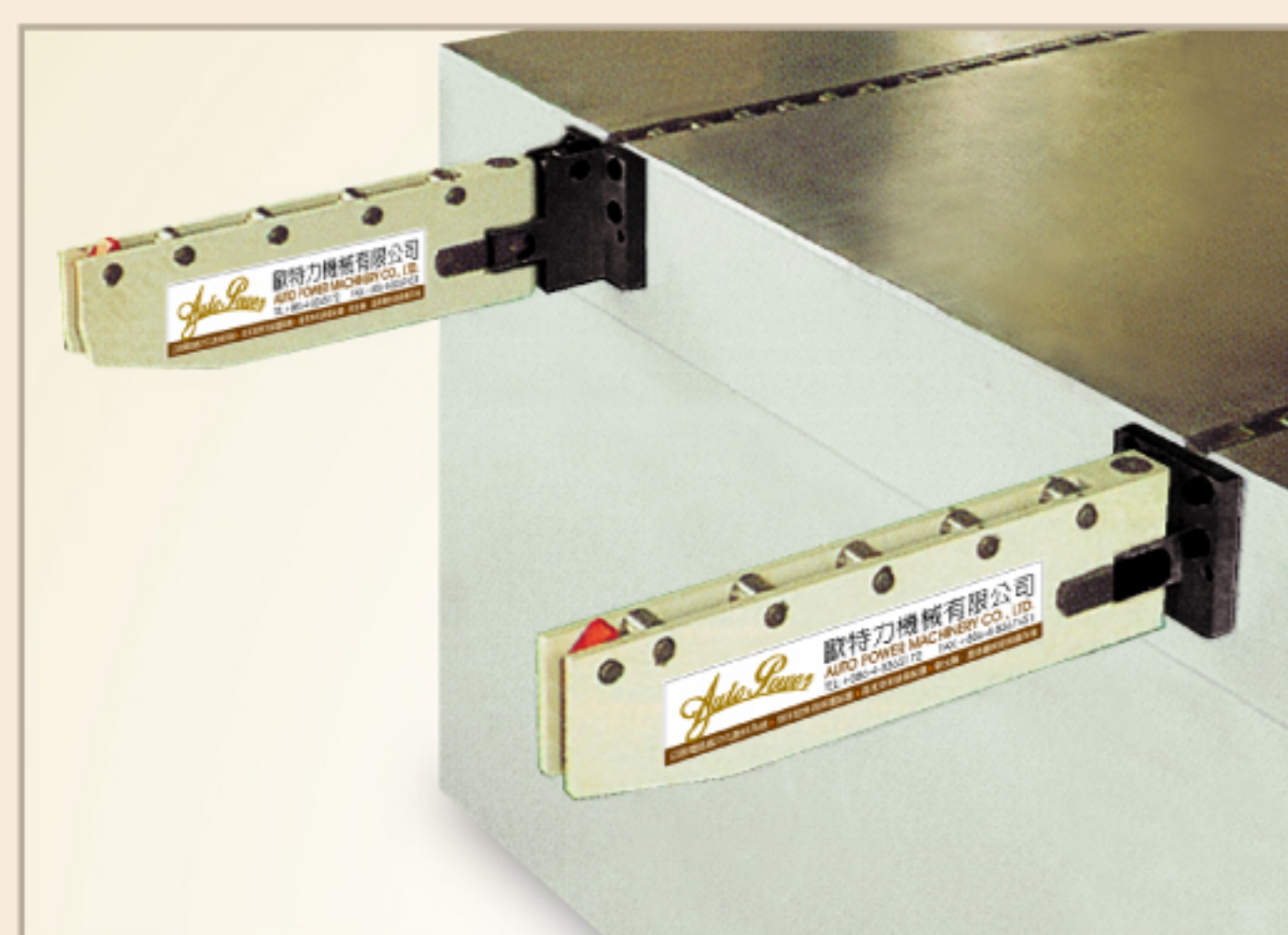
**RC**  
SERIES



**RD**  
SERIES



**RE**  
**RF**  
SERIES





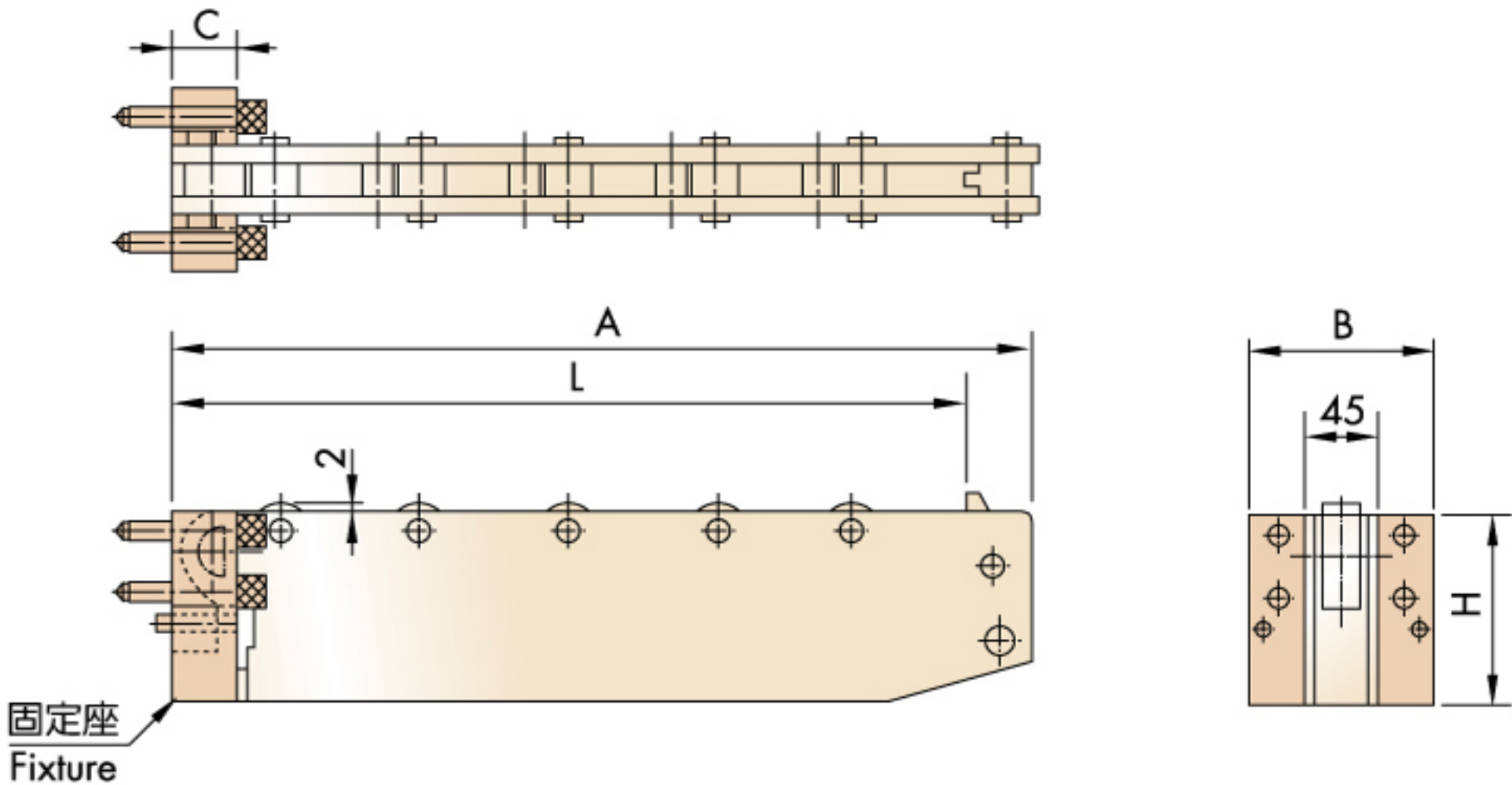


移模臂/BOLSTER EXTENSIONS

歐特力機械有限公司  
AUTO POWER MACHINERY CO., LTD.

印刷電路板沖孔脫料系統 ■ 沖床超負荷保護裝置 ■ 高速沖床鎖模裝置 ■ 射出機 · 壓鑄機快速換模系統

拆卸式 DISMANTLING:RC

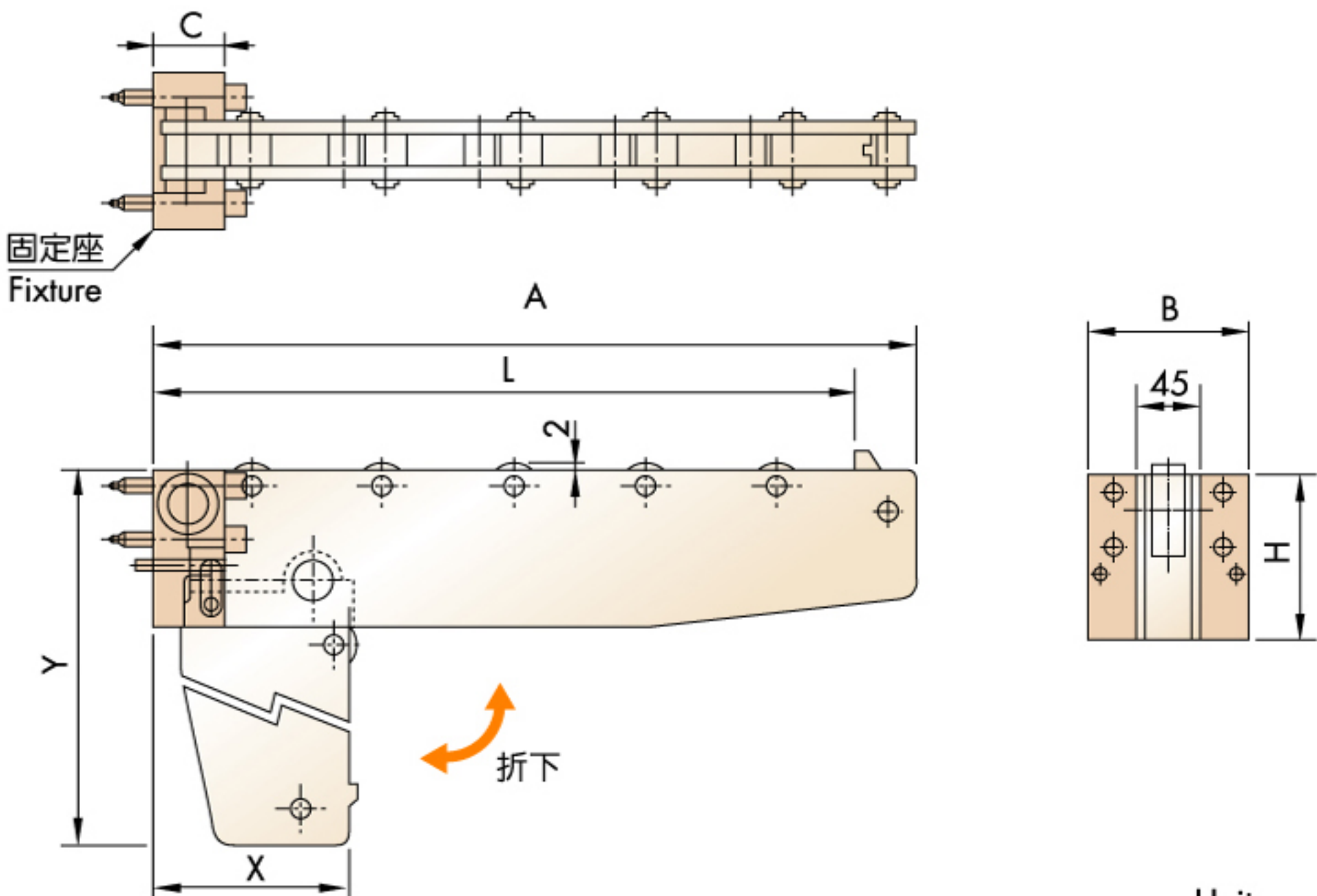
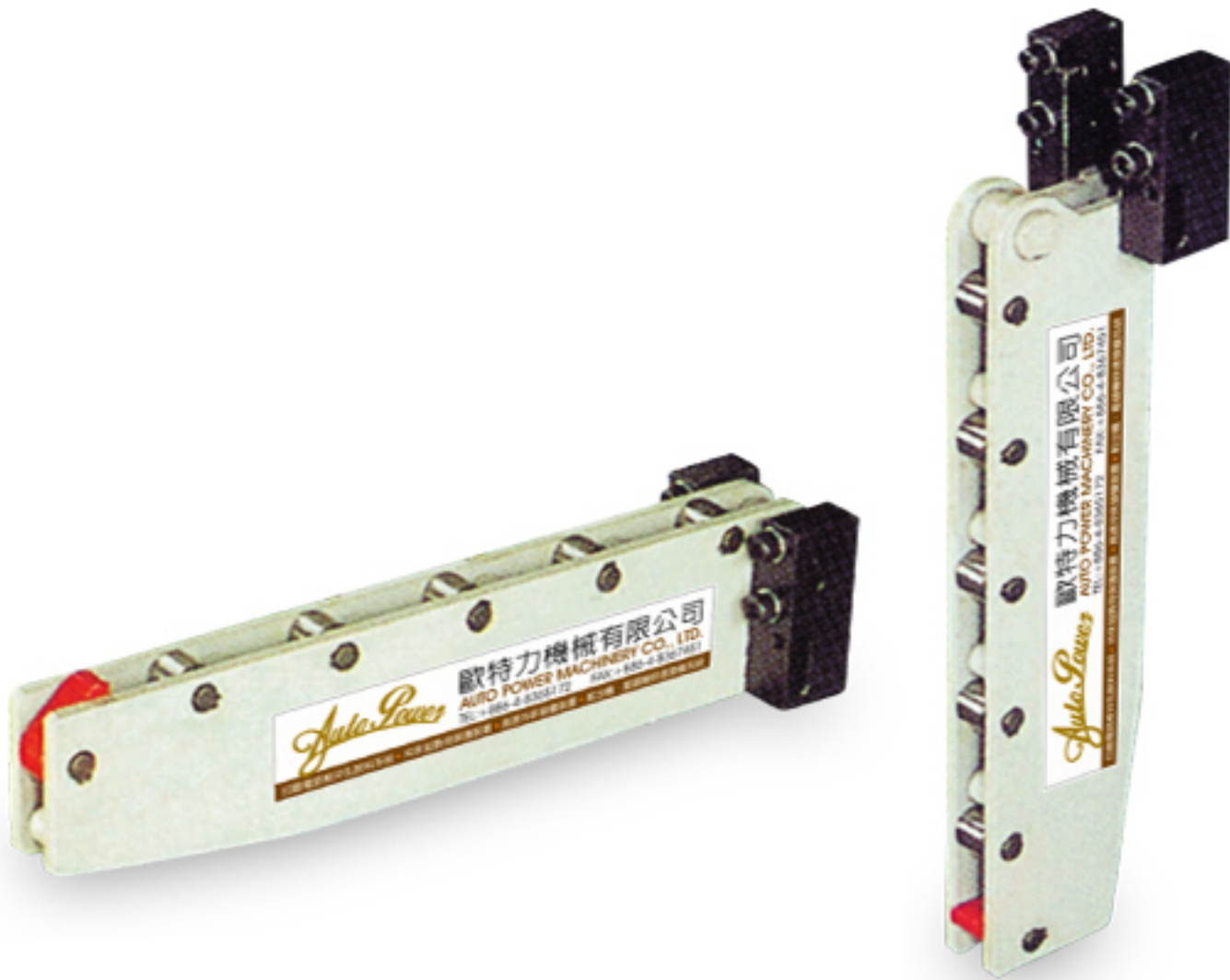


INSTRUCTION OF SPECIFICATION 規格說明

型式 Model	模具使用長 L(mm) Die. Travel L	最大荷重 W(kgs) Max. Load W	總長 A(mm) Overall Length A	固定座尺寸 Size of Fixture			滾輪數 (pcs) Number of Roller	安裝尺寸 Install	固定座形式 Fixture Model
				B(mm)	C(mm)	H(mm)			
RC-500-800	500	800	500	115	48	118	5	A Type	RC-120
RC-500-1250	500	1250	550	130	55	158			RC-160
RC-700-600	700	600	750	115	48	118	7	B Type	RC-120
RC-700-1000	700	1000	750	130	55	158			RC-160
RC-800-800	800	800	850	115	48	158	8	C Type	RC-160
RC-800-1600	800	1600	850	130	55	188			RC-200
RC-800-2000	800	2000	850	130	55	248			RC-240
RC-900-900	900	900	950	115	55	188	9	B Type	RC-200

Any specific size is available based on the needs of the customers. 可依客戶使用需要製作特殊規格

折掛式 HANGING:RD



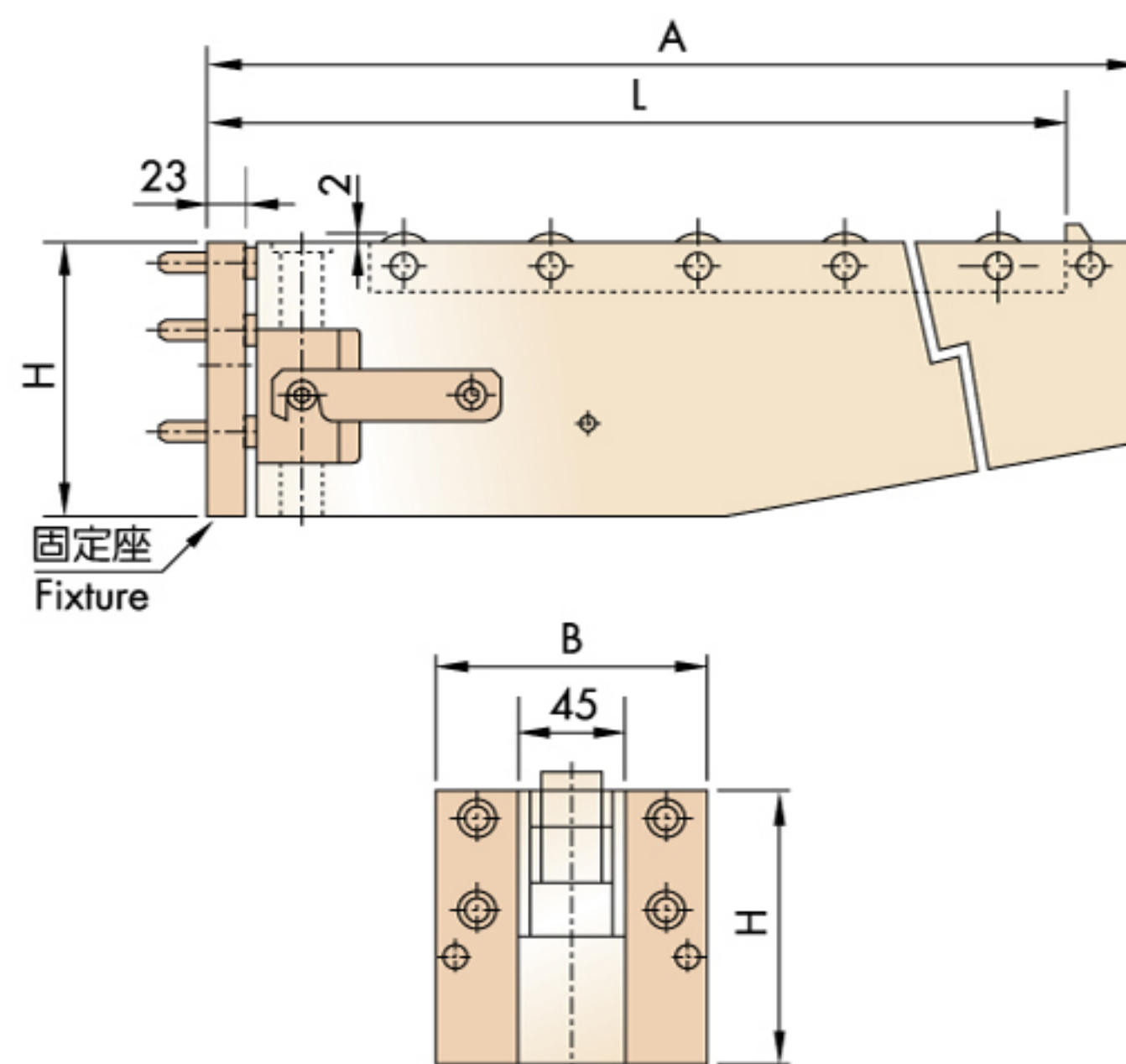
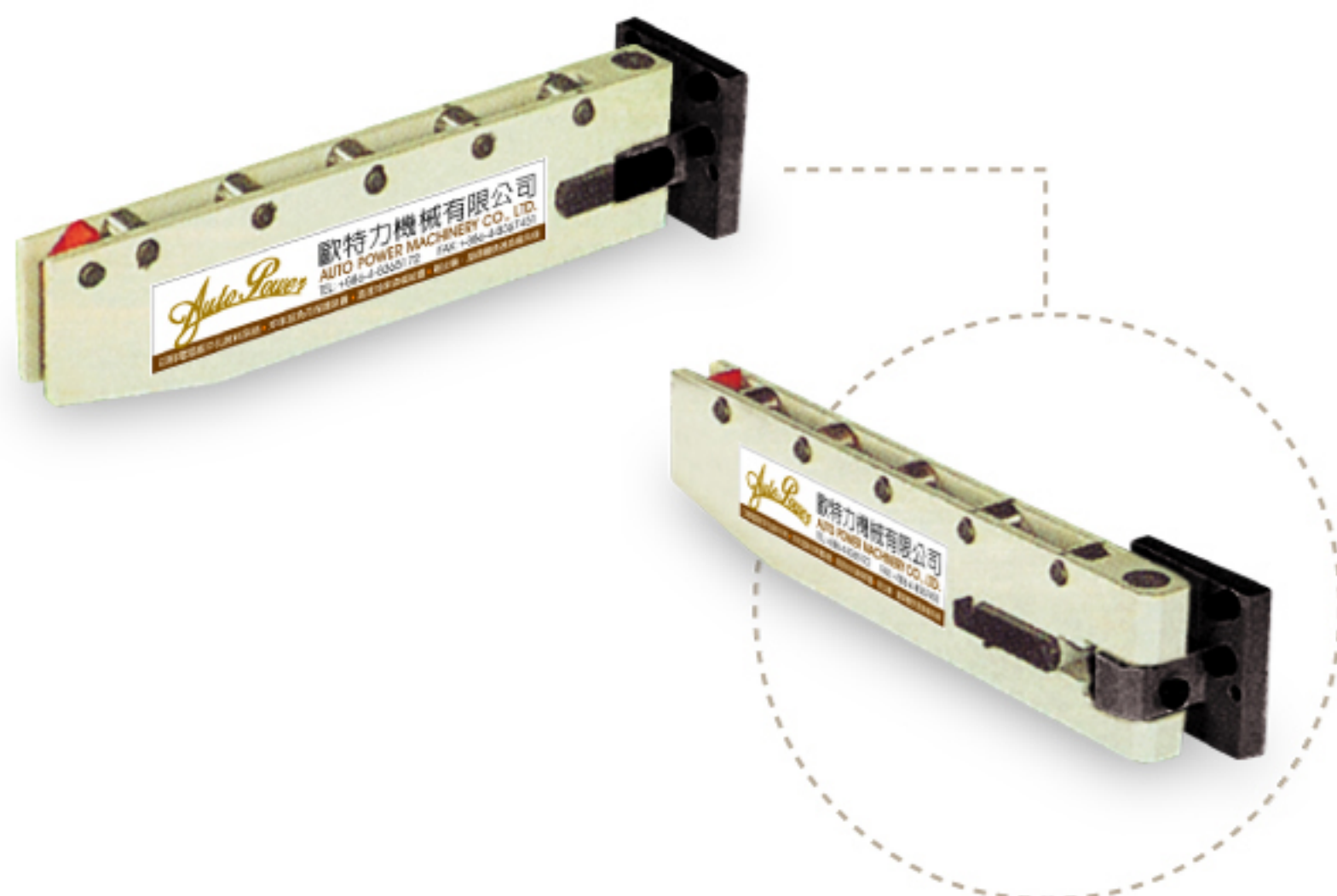
INSTRUCTION OF SPECIFICATION 規格說明

型式 Model	模具使用長 L(mm) Die. Travel L	最大荷重 W(kgs) Max. Load W	總長 A(mm) Overall Length A	固定座尺寸 Size of Fixture			滾輪數 (pcs) Number of Roller	安裝尺寸 Install	折下尺寸 Size of Hanging	
				B(mm)	C(mm)	H(mm)			X(mm)	Y(mm)
RD-500-800	500	800	550	115	52	118	5	A Type	140	620
RD-500-1250	500	1250	550			158	5		180	660
RD-700-600	700	600	750			118	7		140	820
RD-800-800	800	800	850			158	8	B Type	180	960
RD-900-900	900	900	950			188	9		220	1100

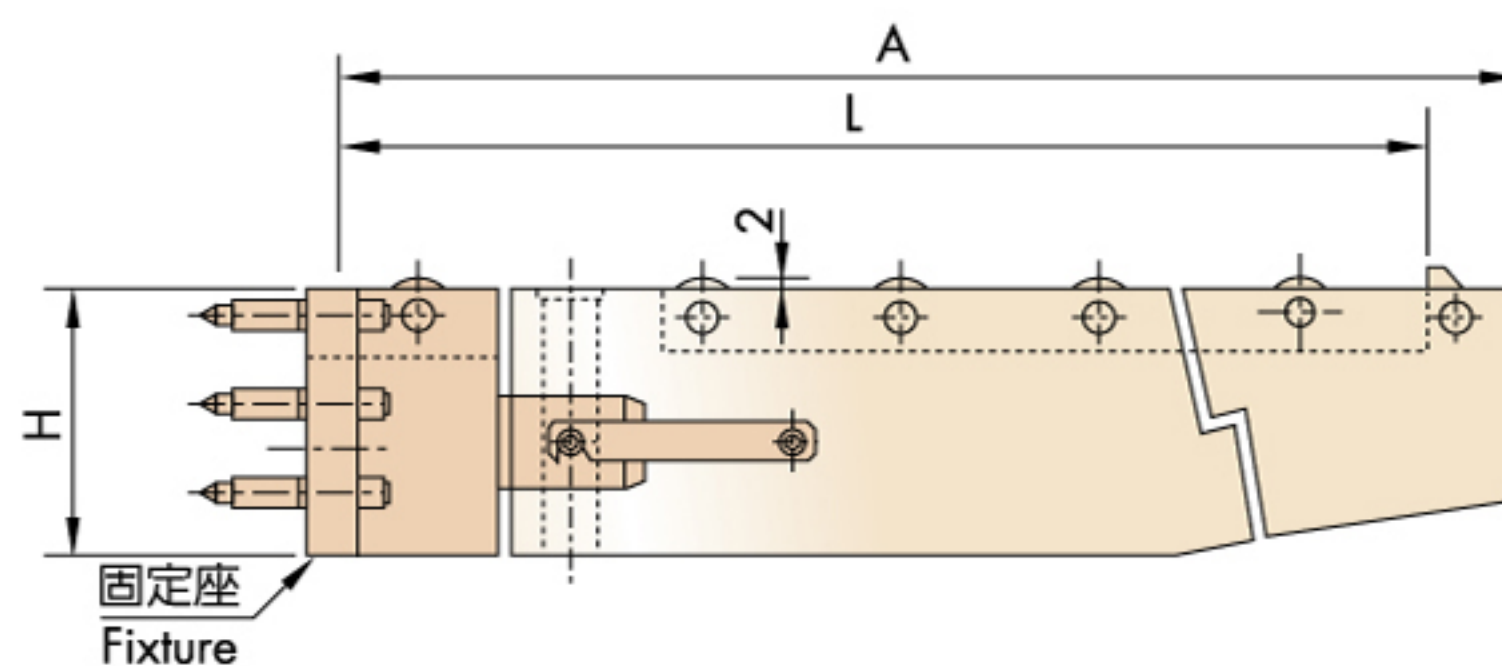
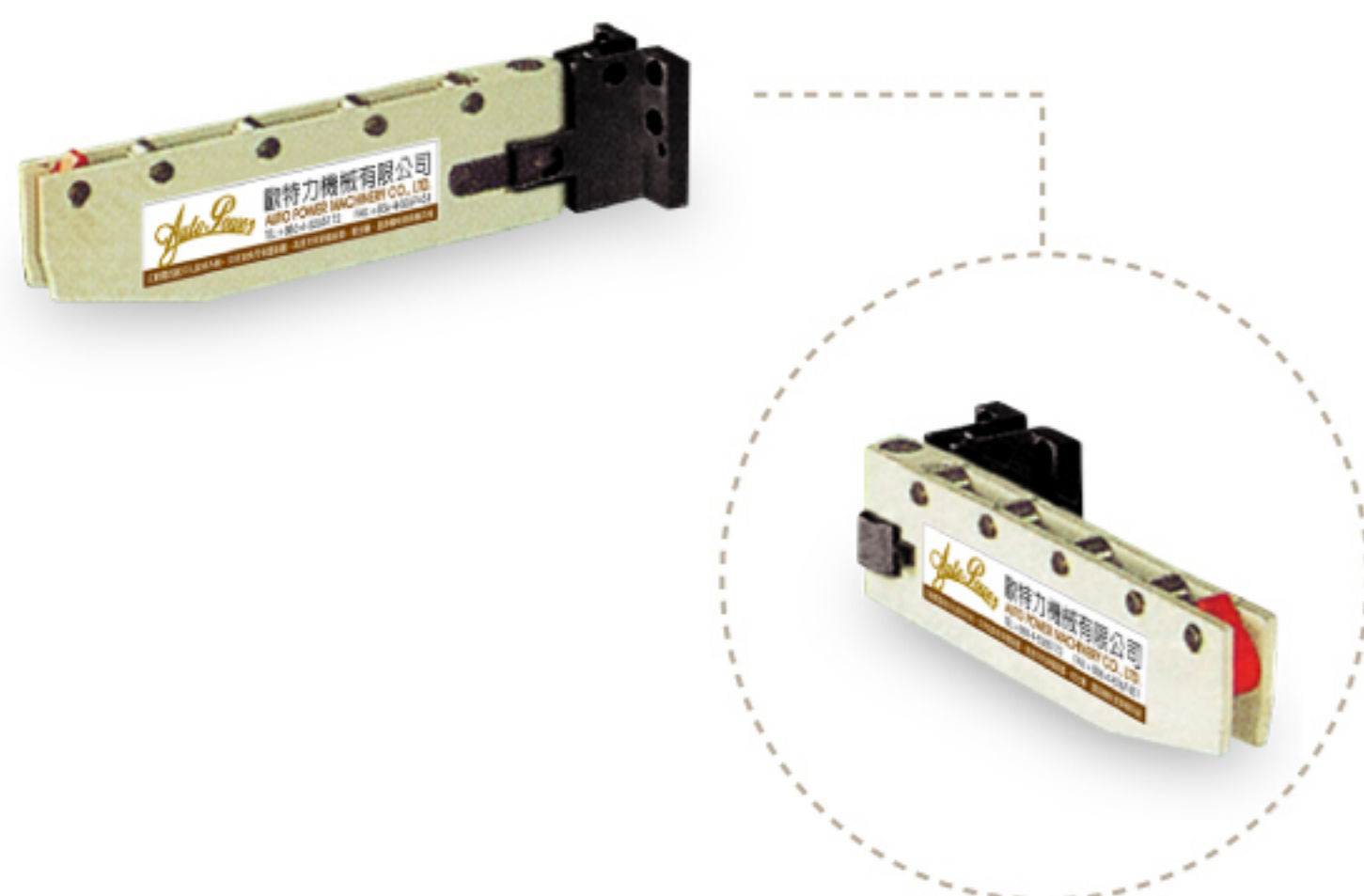
Any specific size is available based on the needs of the customers. 可依客戶使用需要製作特殊規格



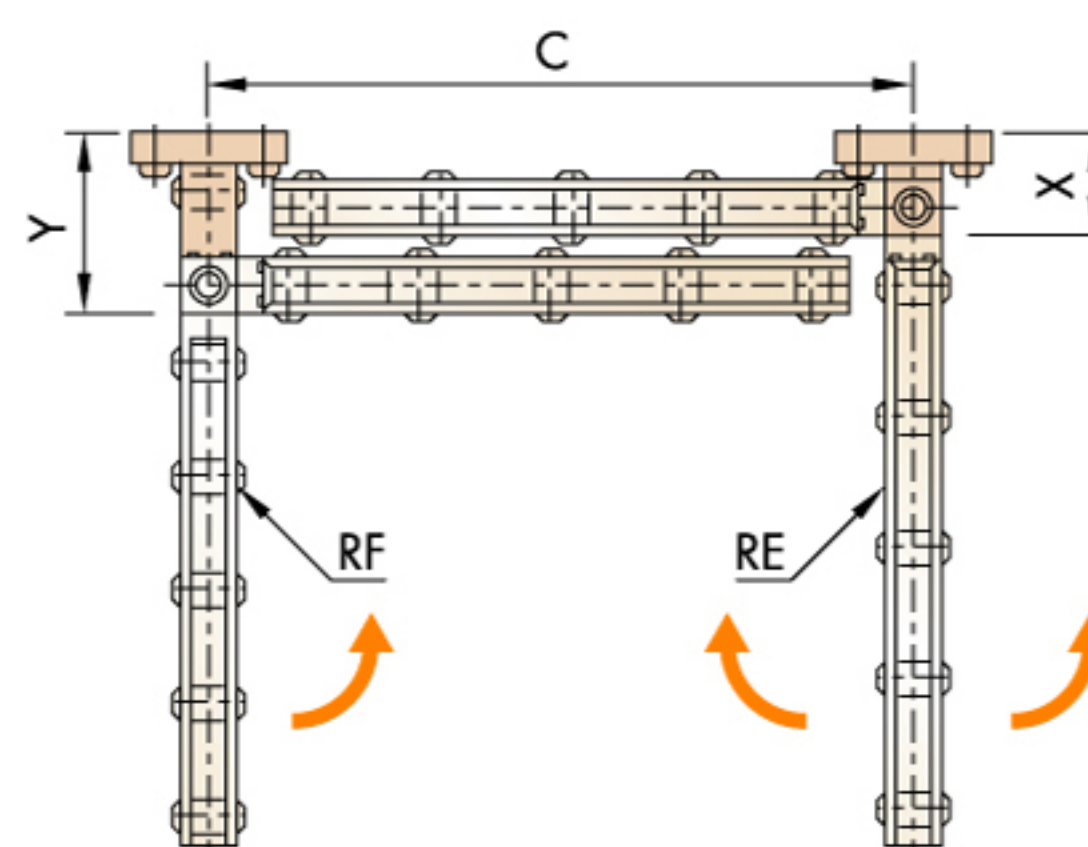
■ 折疊式 FOLDING: **RE**



■ 折疊式 FOLDING: **RF**



■ 折疊式 FOLDING: **RE+RF**



INSTRUCTION OF SPECIFICATION 規格說明

Unit:mm

型式 Model	模具使用長L(mm)	最大荷重W(kgs)	總長A(mm)	固定座尺寸 Size of Fixture			滾輪數 (pcs)	安裝尺寸	折疊尺寸 Size of Fold Down	
	Die. Travel L	Max. Load W	Overall Length A	B(mm)	C(mm)	H(mm)	Number of Roller	Install	X(mm)	Y(mm)
RE/F-500-800	500	800	550	115	525	118	5	A Type	90	150
RE/F-500-1250	500	1250	550		525	158	5			
RE/F-700-600	700	600	750		725	118	7			
RE/F-800-800	800	800	850		825	158	8	B Type		
RE/F-900-900	900	900	950		925	188	9			

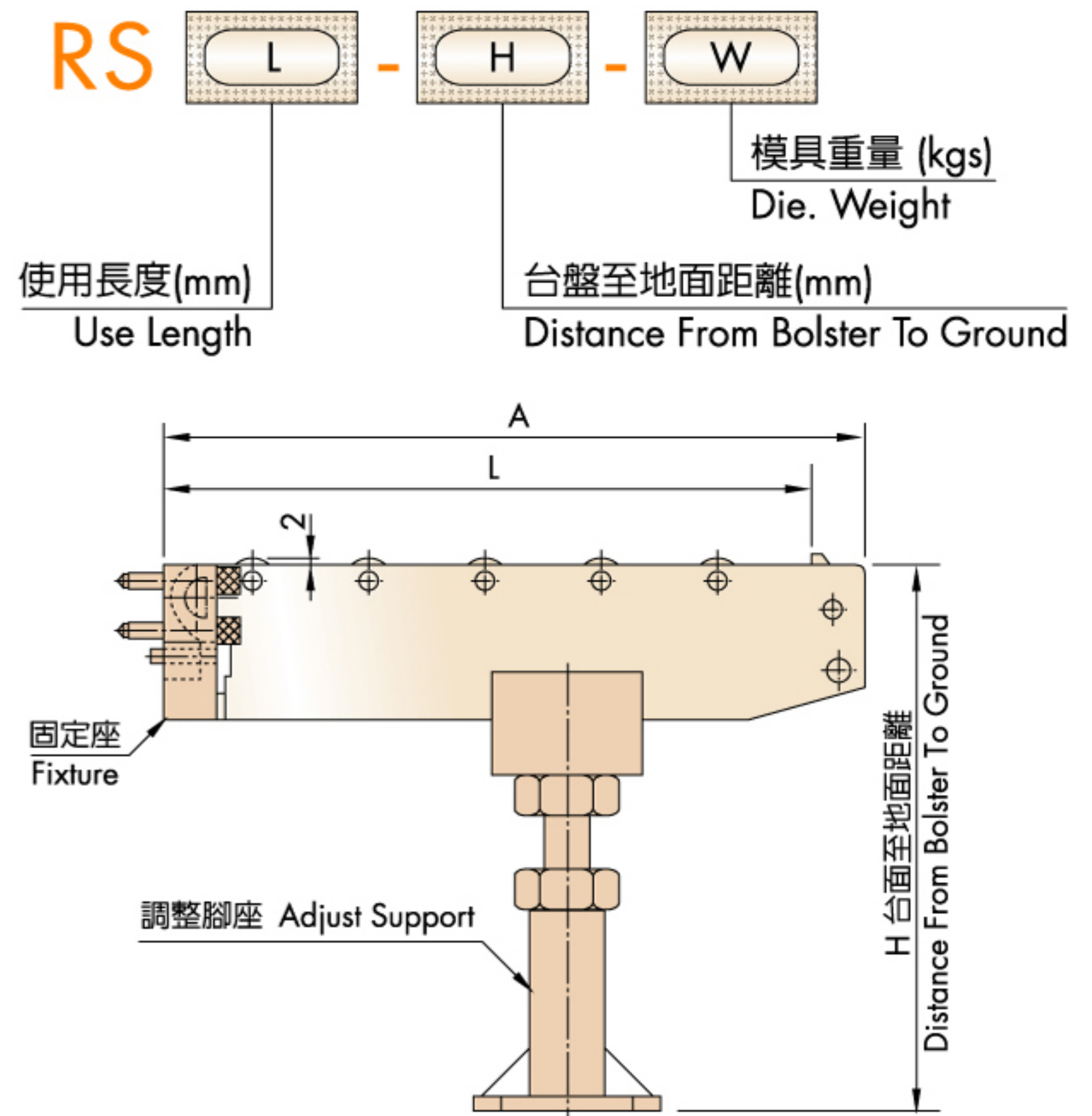
Any specific size is available based on the needs of the customers. 可依客戶使用需要製作特殊規格



### ■ 支柱式 SUPPORTER: RS



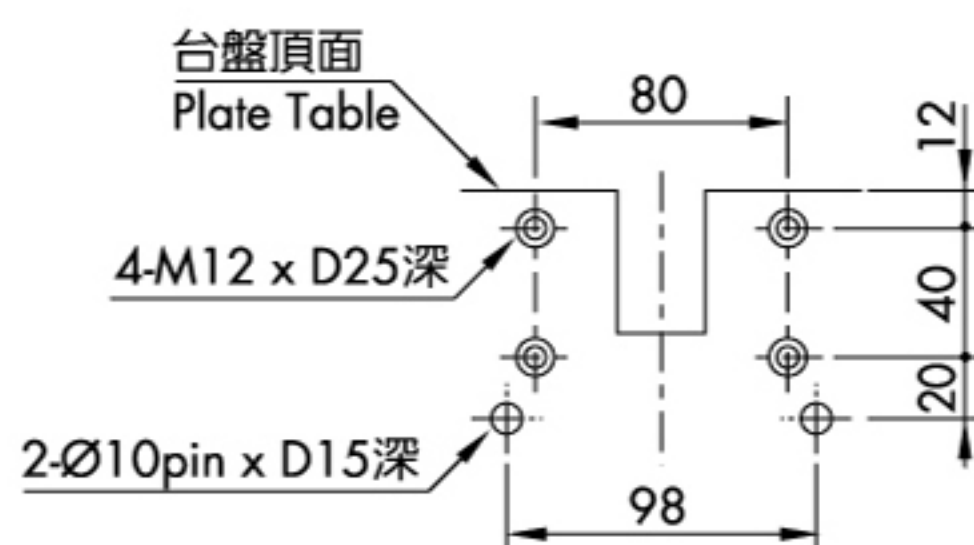
### THE CHOICE OF THE MODEL · 形式選定



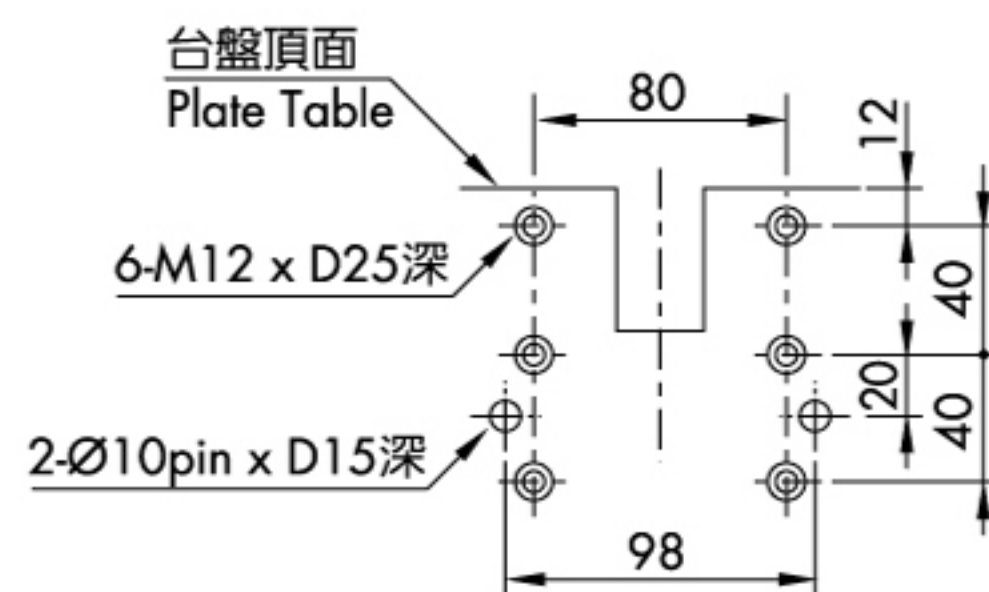
### ■ 安裝鑽孔尺寸 MOUNTING HOLE DIMENSIONS

Unit:mm

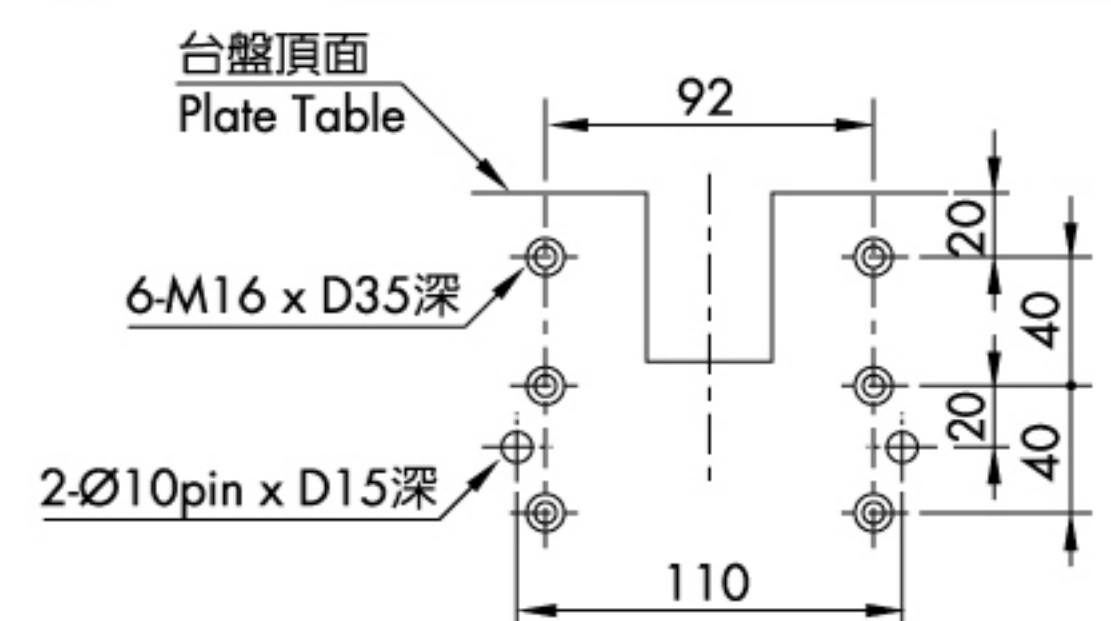
#### ● A TYPE



#### ● B TYPE



#### ● C TYPE



### ■ 相關零件 ACCESSORIES

#### ● 分油座 TUBE CONNECTER

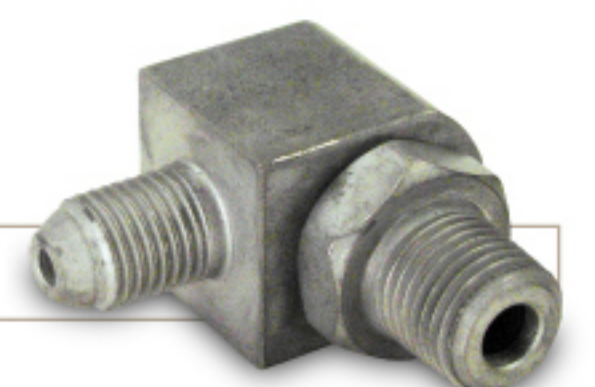


#### ● 壓力開關 PRESSURE-SWITCH

#### ● 氣控閥 NON-LEAK VALVE



#### ● 迴轉接頭 ROTARY JOINT



#### ● 夾具存放架 CLAMP BRACKET





## 1 氣動油壓泵浦單元之使用選定 THE CHOICE OF THE AIR DRIVEN HYDRAULIC PUMP UNIT

1

- 單一供上模或下模夾具使用
- 上下模夾具使用同一迴路
- 單迴路使用於舉模器

- Single for the operation of the die clamp on the upper or lower die.
- The operations of the upper and lower die clamps use the same circuit.
- One circuit for the die lifter.

2

- 一迴路使用於上模而另一迴路使用於下模
- 上下模夾具使用同一迴路且另一迴路使用於舉模器

- One circuit for upper die one circuit for lower die.
- One circuit for simultaneously clamping the upper and lower dies.
- One circuit for the die lifter.

3

- 一迴路使用於上模而另一迴路使用於下模且第三迴路使用於舉模器

- One circuit for upper die, One circuit for lower die, One circuit for the die lifter.

4

- 兩迴路使用於上模交叉夾持方式，另一迴路使用於夾持下模且第四迴路使用於舉模器

- Two circuit for clamping the upper die one circuit for clamping the lower die one circuit for the die lifter

詳載請參閱P3~P4 / Please refer to pages 3~4 for the details.

Unit:mm

## 2 夾模器之選用 THE CHOICE OF CLAMP



### TA型夾模器 TA CLAMP (直拉式)

- 模板有U型溝設計，採用TA型夾具。
- 上模夾模器建議使用。



### TB型夾模器 TB CLAMP (壓板式)

- 模板無U型溝設計，採用TB型夾具。
- 下模夾模器建議使用。

## 夾模器夾持力計算 DETERMINE THE CLAMPING FORCE

- 夾模器總夾持力=沖床沖壓能力(噸數) X 20%
- 上下模夾持力之分配:  
(上模夾持力) : (下模夾持力)=60% : 40%
- (單一夾模器之夾持力)=(上模或下模夾持力)÷(夾模器數量)
- Determine the clamping force (force of a clamp X the number) to 20% or more of the press tonnage for each of the upper and lower dies
- (clamping the upper die) : (clamping the lower die) = 60% : 40%
- (single die clamping force) = (upper or lower die clamping force)÷(clamps number)

詳載請參閱P5~P6 / Please refer to pages 5~6 for the details.

## 3 舉模器之選用 THE CHOICE OF THE DIE LIFTER

- 視模具重量及使用需求選定舉模器之型式-DL.DB.DLS.DS。
- 依台盤尺寸決定舉模器長度。
- 安裝舉模器所需之 T.U形槽尺寸。

- The weight of dies and the need of application → model of die lifter.
- The size of the plate → the length of the die lifter.
- The size of the T or U slot for installing the die lifter.

詳載請參閱P7~P8 / Please refer to pages 7~8 for the details.

## 4 移模臂之運用 SELECTION OF BOLSTER EXTENSION

- 視模具尺寸決定移模臂長度(L)。
- 視模具重量決定移模臂最大承載重量(W)。
- 存放方式 → 移模臂型式-RC.RD.RE/F.RS。

- The size of the die → the length of the arm(L).
- The weight of the die → the maximum capacity of the arm(W).
- The method of storage → the model of the arm.

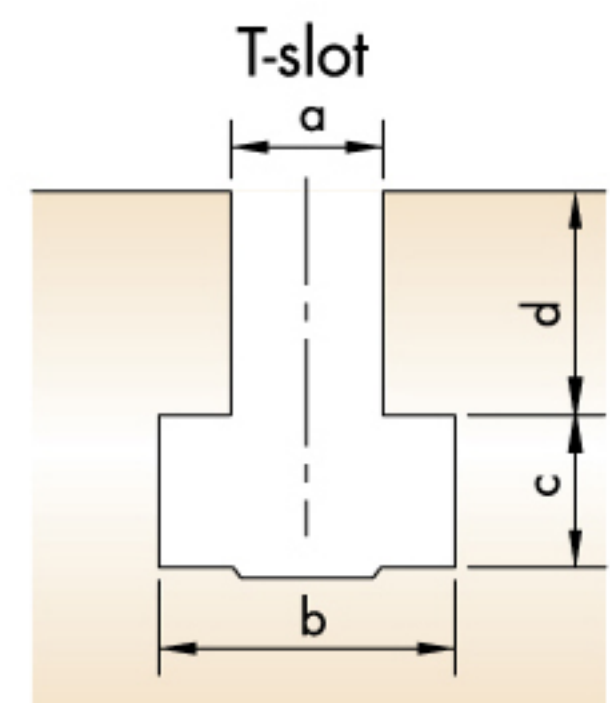
詳載請參閱P9~P12 / Please refer to pages 9~12 for the details.



## 項目 Item: a ■ 沖床規格 Press Specification

### a 沖床規格

- a1. 新機與舊機 New or Existing: ☐ 新機 New ☐ 舊機 Existing
- a2. 沖床廠牌型號 Manufacturer and model:  
廠牌 Manufacturer: \_\_\_\_\_ 型號 Model: \_\_\_\_\_
- a3. 沖床型式 Model:  
C型單曲軸 C-Frame: \_\_\_\_\_ 直柱型 Straight Side: \_\_\_\_\_  
高速型 High Speed: \_\_\_\_\_ 其它 Other Specify: \_\_\_\_\_
- a4. 沖壓噸數 Tonnage: \_\_\_\_\_ (ton)
- a5. 滑塊尺寸 Slide Dimensions: (L-R) \_\_\_\_\_ X (F-B) \_\_\_\_\_ (mm)
- a6. 台盤尺寸 Bolster Dimensions: (L-R) \_\_\_\_\_ X (F-B) \_\_\_\_\_ (mm)
- a7. T溝 T-Slot: ☐ 有 Yes ☐ 無 No  
尺寸 Dimension:  
☐ 滑塊 Slide: a: \_\_\_\_\_ b: \_\_\_\_\_ c: \_\_\_\_\_ d: \_\_\_\_\_ (mm)  
☐ 台盤 Bolster: a: \_\_\_\_\_ b: \_\_\_\_\_ c: \_\_\_\_\_ d: \_\_\_\_\_ (mm)



## 項目 Item: b ■ 模具規格 Die-Specification

### b 模具規格

- b1. 最大重量 Max. Weight: \_\_\_\_\_ (kg)
- b2. 最大尺寸 Max. Dimensions: L: \_\_\_\_\_ X W: \_\_\_\_\_ X H: \_\_\_\_\_ (mm)
- b3. 螺栓U槽 U-Cut For Bolting: ☐ 有 Yes ☐ 無 No
- b4. 模板厚度 Die Shoe Thickness: 上模 Upper Die: \_\_\_\_\_ 下模 Lower Die: \_\_\_\_\_ (mm)
- b5. 特殊需求 Special Requirements: \_\_\_\_\_

## 項目 Item: C ■ 換模系統選用 Die Change System Optional

### C 換模選用

- c1. 上模夾模器 Upper Clamp: \_\_\_\_\_ X \_\_\_\_\_ 個 Pics
- c2. 下模夾模器 Lower Clamp: \_\_\_\_\_ X \_\_\_\_\_ 個 Pics
- c3. 舉模器 Die Lifter: \_\_\_\_\_ X \_\_\_\_\_ 支 Pics
- c4. 移模臂 Bolster Extension: \_\_\_\_\_ X \_\_\_\_\_ 支 Pics
- c5. 氣動油壓泵浦單元 Air Drive Hydraulic Pump Unit: \_\_\_\_\_ X \_\_\_\_\_ 台 Pics
- c6. 電力規格 Power Specification: ☐ AC \_\_\_\_\_ V \_\_\_\_\_ Hz ☐ DC \_\_\_\_\_ V

## 項目 Item: d ■ 客戶資料 Customer Data

### d 客戶資料

- d1. 公司名稱 Company Name: \_\_\_\_\_
- d2. 連絡人 Attn: \_\_\_\_\_ 部門 Dep: \_\_\_\_\_
- d3. 地址 Address: \_\_\_\_\_
- d4. 電話 Phone: \_\_\_\_\_ 分機 Ext: \_\_\_\_\_ d5. 傳真 Fax: \_\_\_\_\_
- d6. 備註 Remark: \_\_\_\_\_



快速換模系統  
**QUICK DIE CHANGE SYSTEM**



歐特力機械有限公司  
AUTO POWER MACHINERY CO., LTD.

印刷電路板沖孔脫料系統 ■ 沖床超負荷保護裝置 ■ 高速沖床鎖模裝置 ■ 射出機 · 壓鑄機快速換模系統

TEL: +886-4-8365172    FAX: +886-4-8367451  
台灣:彰化縣永靖鄉同仁村獨鰲路一段20巷2號  
大陸:廣東省東莞市大朗鎮松木山村水平路口  
E-mail: auto.power8@msa.hinet.net